



Guide Price
£850,000

Freehold

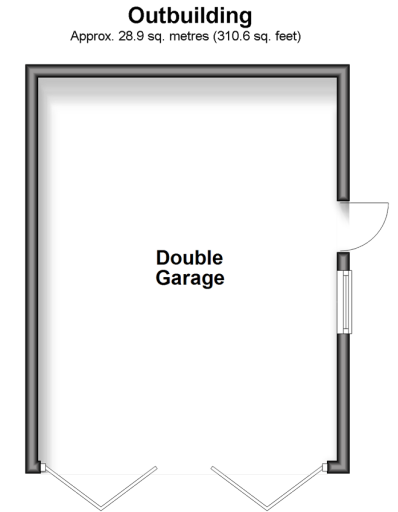
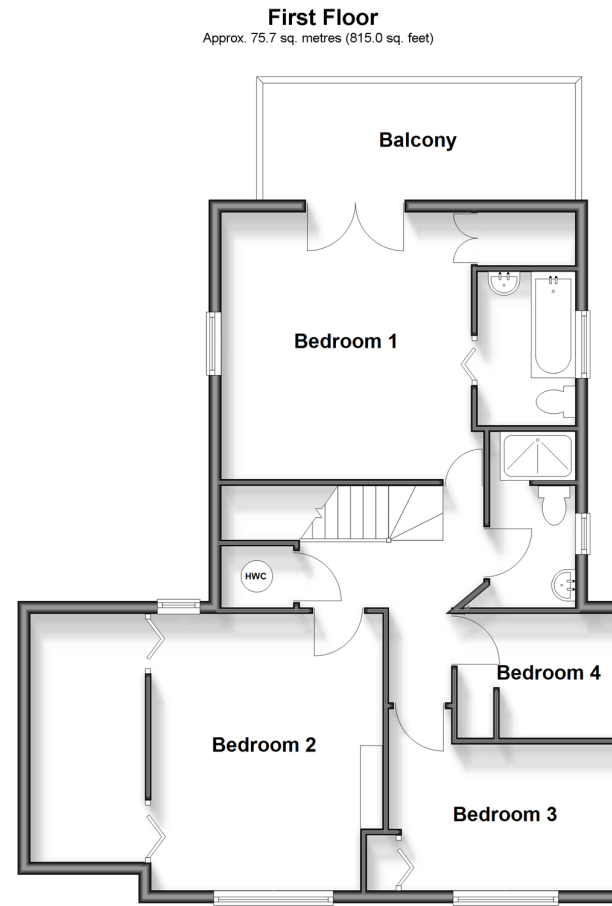
4x  2x  3x 

**Wateringbury Road,
East Malling, Kent, ME19**

OVER 60?

Secure this property
for up to **59% less!**

Wards
Helping you move forwards



Accommodation

GROUND FLOOR

Entrance Porch

Hallway

Cloakroom

Lounge: 14'4 x 11'10 (4.37m x 3.61m) plus 15'9 x 10'10 (4.80m x 3.30m)

Dining Room: 14'2 x 11'0 (4.32m x 3.36m)

Study: 14'1 x 6'8 (4.30m x 2.03m)

Kitchen: 14'5 x 12'0 (4.40m x 3.66m)

Conservatory: 14'2 x 8'1 (4.32m x 2.47m)

FIRST FLOOR

Landing

Bedroom 1: 14'2 x 12'9 up to fitted wardrobes (4.32m x 3.89m)

En-Suite Bathroom

Balcony

Bedroom 2: 14'6 x 11'10 (4.42m x 3.61m)

Walk-In Wardrobe

Bedroom 3: 12'0 x 7'9 (3.66m x 2.36m)

Bedroom 4: 8'8 x 6'5 (2.64m x 1.96m)

Shower Room

OUTBUILDING

Double Garage: 20'0 x 16'0 (6.10m x 4.88m)

OUTSIDE

Driveway

Front, Side & Rear Gardens

3 Sheds

Poly Tunnel



Main features

- Set in a wonderful semi rural location
- Bedroom 1 is complemented with a large balcony for you to enjoy - relax & admire the garden view
- An en-suite bathroom, a shower room & a cloakroom adds convenience for a large family.
- The secluded garden is perfect for gardening enthusiasts & for hosting summer parties
- Feel away from it all & yet you have easy access to amenities, schools, rail stations & the M20



Nearest Schools

Primary Schools: The Discovery School 0.9 miles, St James the Great Primary and Nursery School 1.0 miles, More Park Catholic Primary 1.4 miles. Secondary Schools: The Malling School 0.8 miles, Aylesford School 1.8 miles, Grange Park School 2.0 miles



Transport Information

Train Stations: East Malling 0.5 miles, West Malling 1.2 miles, Watlingbury 1.6 miles



Address

Watlingbury Road, East Malling, Kent, ME19



Directions

For directions to this property please contact us.



Wards
Helping you move forwards

Call Larkfield Branch 01732 847877 ■ wardsofkent.co.uk



■ Legal advice should be taken to verify fixtures/fittings, planning, alterations and/or lease details ■ Appliances & services are untested, dimensions are approximate and floor plans are not to scale
■ Through a Homewise Home For Life Plan people aged 60+ can secure this property for up to 59% less, by purchasing a Lifetime Lease.



12934541/20250515/RT/JT