



Price
£325,000

Freehold

3x  1x  1x 

**Raven Close, Larkfield,
Aylesford, Kent, ME20**

OVER 60?

Secure this property
for up to **59% less!**

Wards
Helping you move forwards



Main features

- Well presented throughout
- The bright conservatory adds an extra dimension to the home
- Relax in the sunny & low maintenance rear garden
- Enjoy a swim or gym session at the Larkfield Leisure Centre nearby
- Excellent commuter links by road & rail within easy reach

Accommodation

GROUND FLOOR

Entrance Hall

Lounge: 17'5 x 10'11 (5.31m x 3.33m)

Conservatory: 11'0 x 9'4 (3.36m x 2.85m)

Kitchen: 13'2 x 10'2 (4.02m x 3.10m)

Store: 8'3 x 4'7 (2.52m x 1.40m)

Lobby

FIRST FLOOR

Landing

Bedroom 1: 11'9 x 10'2 (3.58m x 3.10m)

Bedroom 2: 11'4 x 11'1 (3.46m x 3.38m)

Bedroom 3: 7'11 x 7'4 (2.41m x 2.24m)

Separate Toilet

Bathroom

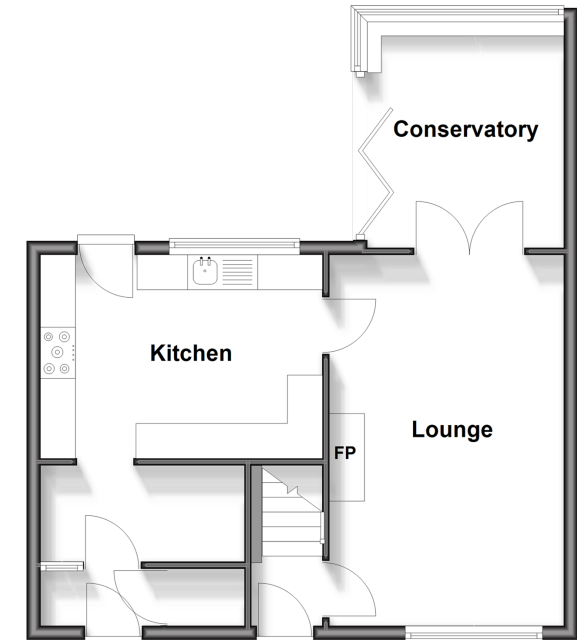
OUTSIDE

Driveway

Front & Rear Gardens

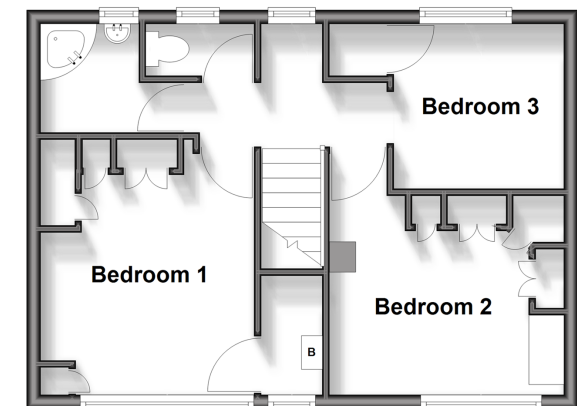
Ground Floor

Approx. 49.0 sq. metres (527.0 sq. feet)



First Floor

Approx. 39.6 sq. metres (426.5 sq. feet)



Call Larkfield - 01732 847877 ■ wardsofkent.co.uk

- Legal advice should be taken to verify fixtures/fittings, planning, alterations and/or lease details
- Appliances & services are untested, dimensions are approximate and floor plans are not to scale
- Through a Homewise Home For Life Plan people aged 60+ can secure this property for up to 59% less, by purchasing a Lifetime Lease.



12935431/20250327/CK/JT