



Price
£550,000

Freehold

5x  2x  2x 

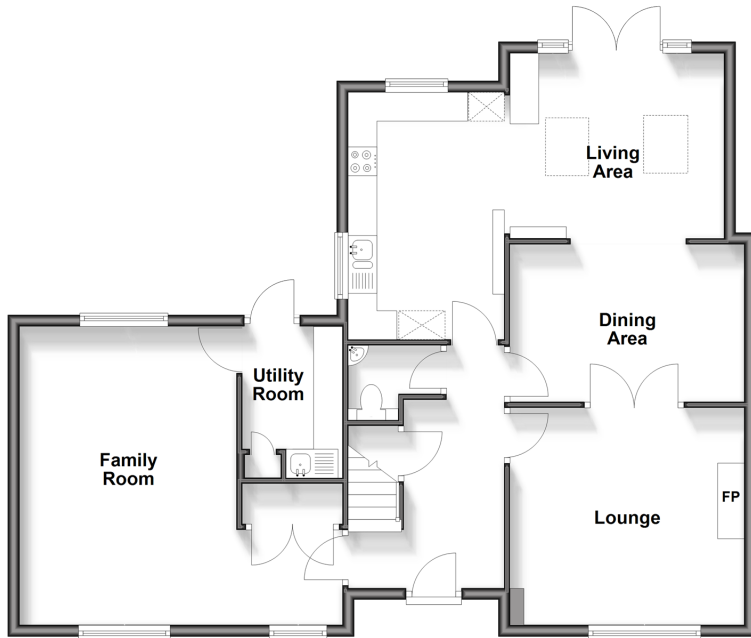
**Sycamore Drive,
Greenacres, Aylesford,
Kent, ME20**

OVER 60?

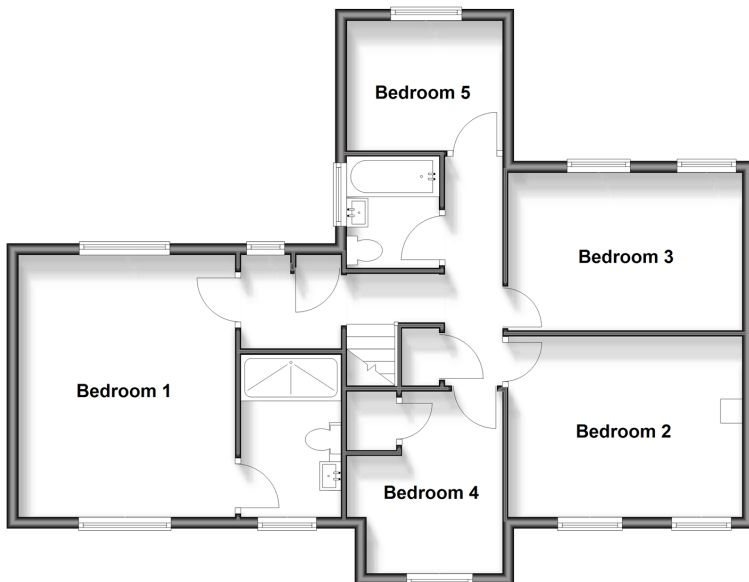
Secure this property
for up to **59% less!**

Wards
Helping you move forwards

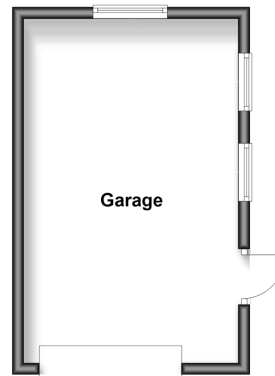
Ground Floor
Approx. 92.8 sq. metres (999.1 sq. feet)



First Floor
Approx. 76.7 sq. metres (826.1 sq. feet)



Outbuilding
Approx. 22.7 sq. metres (244.1 sq. feet)



Accommodation

GROUND FLOOR

Entrance Hall

Lounge: 13'3 x 12'4 (4.04m x 3.76m)

Dining Area: 13'3 x 8'11 (4.04m x 2.72m)

Living Area: 13'1 x 11'3 (3.99m x 3.43m)

Kitchen: 14'0 x 8'10 (4.27m x 2.69m)

Cloakroom

Family Room: 18'5 into door well (5.62m) narrowing to 12'4 (3.76m) x 15'0 (4.58m)

Utility : 9'5 x 5'8 (2.87m x 1.73m)

FIRST FLOOR

Landing

Bedroom 1: 15'0 x 12'5 (4.58m x 3.79m)

En-Suite Shower Room

Bedroom 2: 13'6 x 10'5 (4.12m x 3.18m)

Bedroom 3: 13'5 x 8'11 (4.09m x 2.72m)

Bedroom 4: 10'7 x 8'10 (3.23m x 2.69m)

Bedroom 5: 8'10 x 7'3 (2.69m x 2.21m)

Bathroom

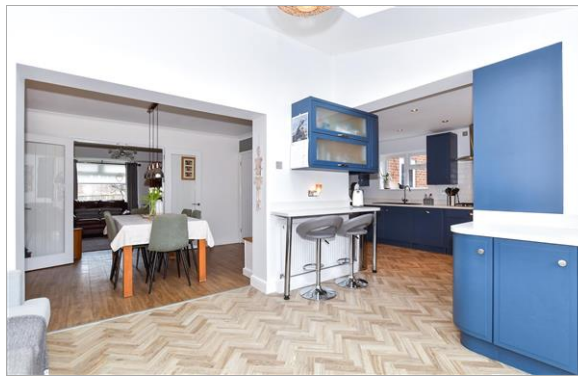
OUTBUILDING

Garage

OUTSIDE

Driveway

Front & Rear Gardens



Main features

- Beautifully presented throughout
- Great sociable kitchen/dining/living area - perfect for entertaining
- All bedrooms are a good size - no box room to worry about
- Sunny & secluded garden to enjoy
- Walk to good schools, shops & Aylesford rail station



Nearest Schools

Primary Schools: Aylesford Primary 0.2 miles, Ditton C of E Junior School 0.7 miles, St Peter's C of E Primary 0.7 miles. Secondary Schools: Aylesford School 0.2 miles, The Malling School 1.5 miles, St Simon Stock Catholic School 1.9 miles



Transport Information

Train Stations: Aylesford 0.4 miles, Barming 0.8 miles, New Hythe 1.3 miles



Address

Sycamore Drive, Greenacres, Aylesford, Kent, ME20



Directions

For directions to this property please contact us.



Wards
Helping you move forwards

Call Larkfield Branch 01732 847877 ■ wardsofkent.co.uk



■ Legal advice should be taken to verify fixtures/fittings, planning, alterations and/or lease details ■ Appliances & services are untested, dimensions are approximate and floor plans are not to scale
■ Through a Homewise Home For Life Plan people aged 60+ can secure this property for up to 59% less, by purchasing a Lifetime Lease.



12935423/20250417/CK/JT