



Guide Price
£325,000

Freehold

2x  2x  1x 

**Carmelite Road,
Aylesford, Kent, ME20**

OVER 60?

Secure this property
for up to **59% less!**

Wards
Helping you move forwards



Main features

- Very well presented throughout
- Useful ground floor cloakroom
- Sociable lounge/diner - great for today's lifestyle
- Lovely sunny & secluded garden for you to enjoy
- Excellent commuter links - walk to Aylesford station & M20 is nearby

Accommodation

GROUND FLOOR

Entrance Hall

Cloakroom

Lounge/Diner: 14'10 x 14'7 (4.52m x 4.45m)

Kitchen: 11'2 x 6'10 (3.41m x 2.08m)

FIRST FLOOR

Landing

Bedroom 1: 14'7 x 9'1 (4.45m x 2.77m)

En-Suite Shower Room

Bedroom 2: 11'9 x 7'10 (3.58m x 2.39m)

Bathroom

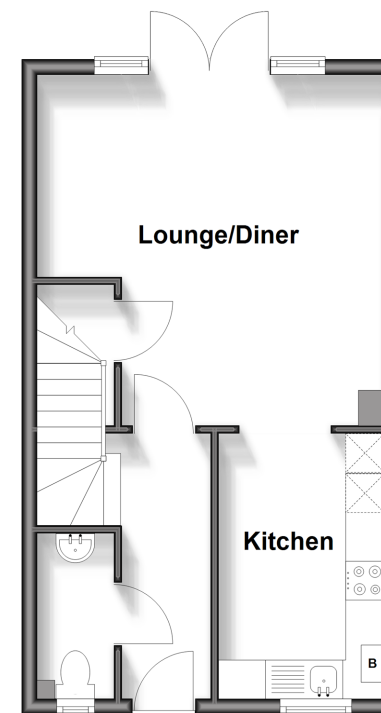
OUTSIDE

Front & Rear Gardens

2 Allocated Parking Spaces

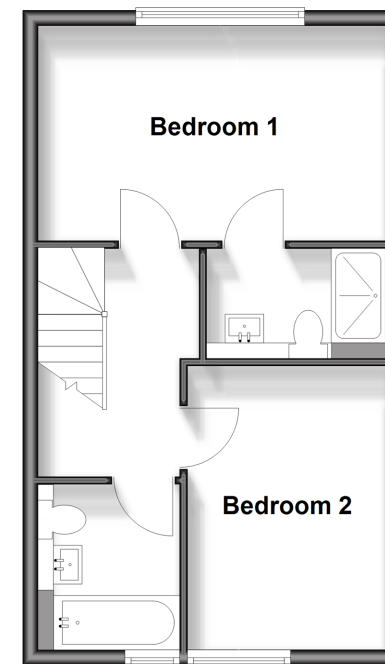
Ground Floor

Approx. 36.1 sq. metres (388.8 sq. feet)



First Floor

Approx. 36.1 sq. metres (388.8 sq. feet)



Call Larkfield - 01732 847877 ■ wardsofkent.co.uk

- Legal advice should be taken to verify fixtures/fittings, planning, alterations and/or lease details
- Appliances & services are untested, dimensions are approximate and floor plans are not to scale
- Through a Homewise Home For Life Plan people aged 60+ can secure this property for up to 50% less, by purchasing a Lifetime Lease.



12935366/20250924/JT/JT