



**OVER 60?**

Secure this property  
for up to **59% less!**

**Price**

**£285,000**

**Freehold**

2x  1x  1x 

**Rochester Road,  
Aylesford, Kent, ME20**

*Wards*  
Helping you move forwards





## Main features

- Beautifully presented throughout
- Good size bedrooms - no box room to worry about
- Relax in the private & sunny rear garden
- Good shops, schools & leisure facilities all within easy reach
- Excellent commuter links - walk to Aylesford station & close to the M20

## Accommodation

### GROUND FLOOR

Lounge: 11'10 x 11'5 (3.61m x 3.48m)  
 Dining Area: 11'5 x 9'10 (3.48m x 3.00m)  
 Kitchen: 9'10 x 5'6 (3.00m x 1.68m)  
 Lobby  
 Bathroom

### FIRST FLOOR

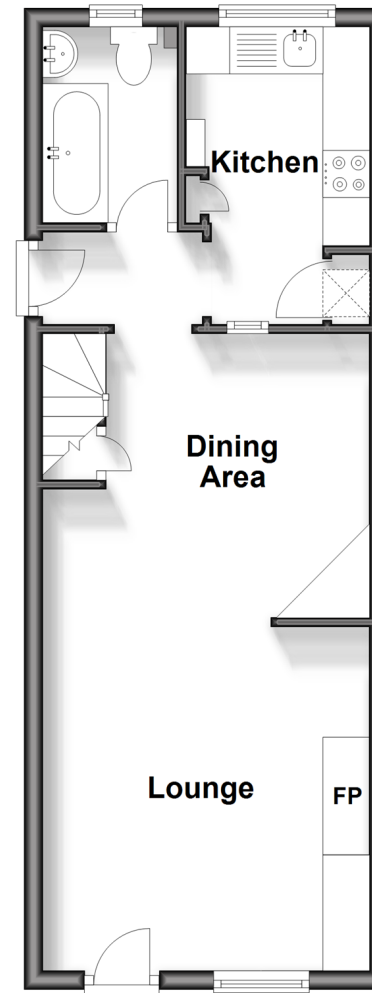
Landing  
 Bedroom 1: 11'10 x 11'5 (3.61m x 3.48m)  
 Bedroom 2: 10'0 x 8'11 (3.05m x 2.72m)

### OUTSIDE

Front & Rear Gardens

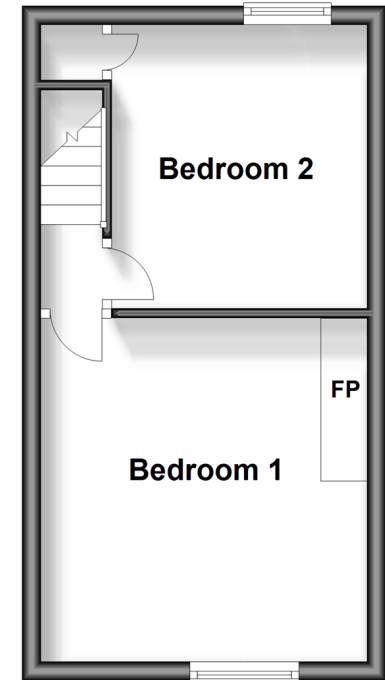
## Ground Floor

Approx. 34.5 sq. metres (371.7 sq. feet)



## First Floor

Approx. 23.5 sq. metres (253.2 sq. feet)



**Call Larkfield - 01732 847877 ■ [wardsofkent.co.uk](http://wardsofkent.co.uk)**

- Legal advice should be taken to verify fixtures/fittings, planning, alterations and/or lease details
- Appliances & services are untested, dimensions are approximate and floor plans are not to scale
- Through a Homewise Home For Life Plan people aged 60+ can secure this property for up to 59% less, by purchasing a Lifetime Lease.



12935434/20250311/CK/JT