



Price
£440,000

Freehold

3x  2x  1x 

**Larkfield Close,
Larkfield, Aylesford,
Kent, ME20**

OVER 60?

Secure this property
for up to **59% less!**

Wards
Helping you move forwards



Main features

- Stunning home set in a quiet Close
- Enjoy the luxury of a an en-suite shower room & a bathroom
- A log burner in the kitchen/dining area keeps you warm in the winter
- Modern fitted kitchen makes cooking a pleasure
- Good schools, shops & commuter links within easy reach

Accommodation

GROUND FLOOR

Entrance Hall

Dining Area: 13'6 x 10'8 (4.12m x 3.25m)

Kitchen: 16'9 x 7'9 (5.11m x 2.36m) plus 14'2 x 8'11 (4.32m x 2.72m)

Lounge: 19'7 x 10'7 (5.97m x 3.23m)

Store: 12'1 x 7'6 (3.69m x 2.29m)

FIRST FLOOR

Landing

Bedroom 1: 13'2 x 10'6 (4.02m x 3.20m)

En-Suite Bathroom

Bedroom 2: 16'8 x 8'1 (5.08m x 2.47m)

Bedroom 3: 8'10 x 8'2 (2.69m x 2.49m)

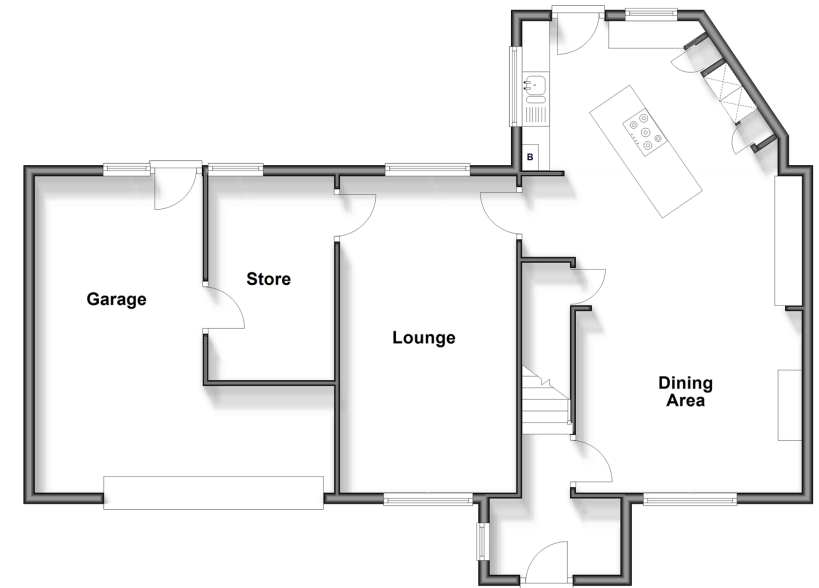
Shower Room

OUTSIDE

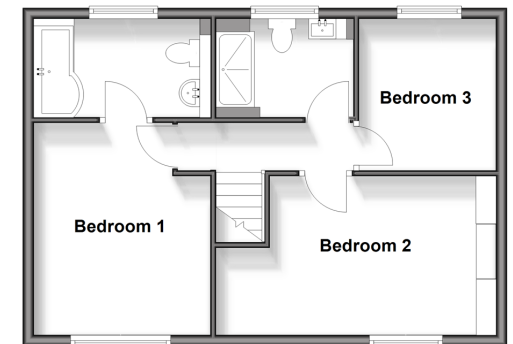
Driveway & Garage

Rear Garden

Ground Floor
Approx. 97.2 sq. metres (1046.2 sq. feet)



First Floor
Approx. 49.4 sq. metres (532.3 sq. feet)



Call Larkfield - 01732 847877 ■ wardsofkent.co.uk

- Legal advice should be taken to verify fixtures/fittings, planning, alterations and/or lease details
- Appliances & services are untested, dimensions are approximate and floor plans are not to scale
- Through a Homewise Home For Life Plan people aged 60+ can secure this property for up to 59% less, by purchasing a Lifetime Lease.



12923369/20250313/CK/JT