



**Price**

**£700,000**

**Freehold**

4x  2x  2x 

**Bell Lane, Ditton,  
Aylesford, Kent, ME20**

**OVER 60?**

Secure this property  
for up to **59% less!**

*Wards*  
Helping you move forwards

## Accommodation

### GROUND FLOOR

Entrance Hall

Kitchen/Dining Area: 24'5 x 12'11 (7.45m x 3.94m)

Utility: 11'3 x 7'4 (3.43m x 2.24m)

Lounge: 19'9 x 13'1 (6.02m x 3.99m)

Family Room: 11'7 x 11'5 (3.53m x 3.48m)

Bedroom 1: 16'0 x 15'0 (4.88m x 4.58m)

Dressing Room

En-Suite Bathroom

Bedroom 2: 13'0 x 11'7 (3.97m x 3.53m)

Bedroom 3: 13'0 x 9'3 (3.97m x 2.82m)

Bedroom 4: 11'5 x 9'2 (3.48m x 2.80m)

Shower Room

### OUTSIDE

Driveway

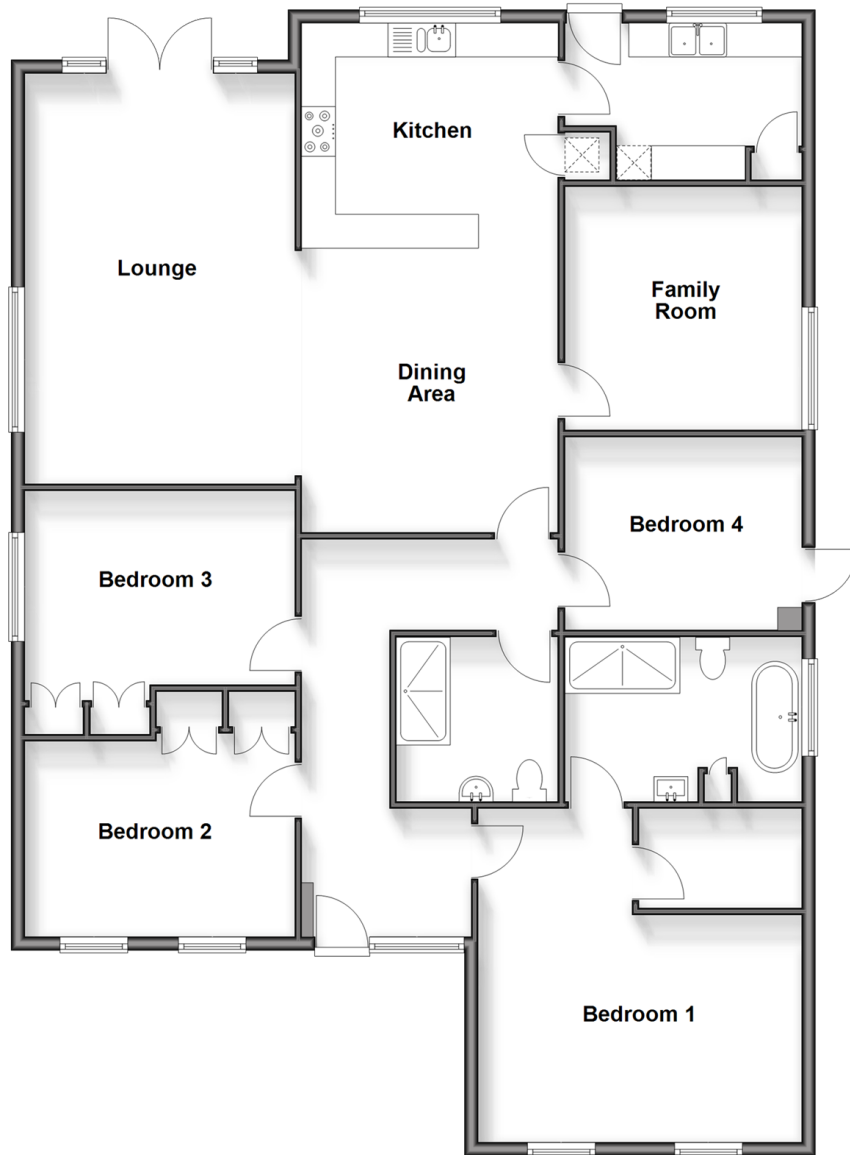
Double Garage: 23'10 x 17'9 (7.27m x 5.41m)

Front & Rear Gardens

Bar/Cabin: 11'9 x 9'0 (3.58m x 2.75m)

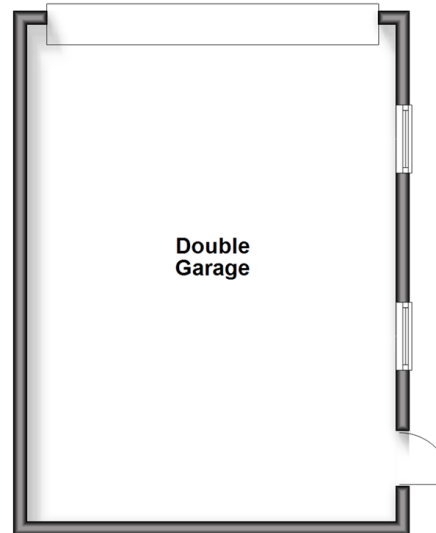
### Ground Floor

Approx. 165.6 sq. metres (1782.8 sq. feet)



### Outbuilding

Approx. 39.9 sq. metres (429.3 sq. feet)







## Main features

- Unique & wonderful home - ideal for the largest of families
- Handy utility room & the family room offers flexibility to use this space to suit you
- Good sized patio & summerhouse in the lovely rear garden to enjoy
- Excellent commuter links by road & rail nearby
- Great location to live - close to good schools, amenities & leisure facilities



### Nearest Schools

Primary Schools: Ditton C of E Junior School 0.5 miles, Brookfield Junior School 0.8 miles, Lunsford Primary 0.8 miles. Secondary Schools: Aylesford School 1.0 miles, The Malling School 1.2 miles, Grange Park School 2.9 miles



### Transport Information

Train Stations: East Malling 1.6 miles, Barming 1.6 miles, New Hythe 1.8 miles



### Address

Bell Lane, Ditton, Aylesford, Kent, ME20



### Directions

For directions to this property please contact us.





Call Larkfield Branch 01732 847877 ■ [wardsofkent.co.uk](http://wardsofkent.co.uk)



- Legal advice should be taken to verify fixtures/fittings, planning, alterations and/or lease details
- Appliances & services are untested, dimensions are approximate and floor plans are not to scale
- Through a Homewise Home For Life Plan people aged 60+ can secure this property for up to 59% less, by purchasing a Lifetime Lease.



12935007/20250310/CK/JT