



OVER 60?

Secure this property
for up to **59% less!**

Price
£465,000

Freehold

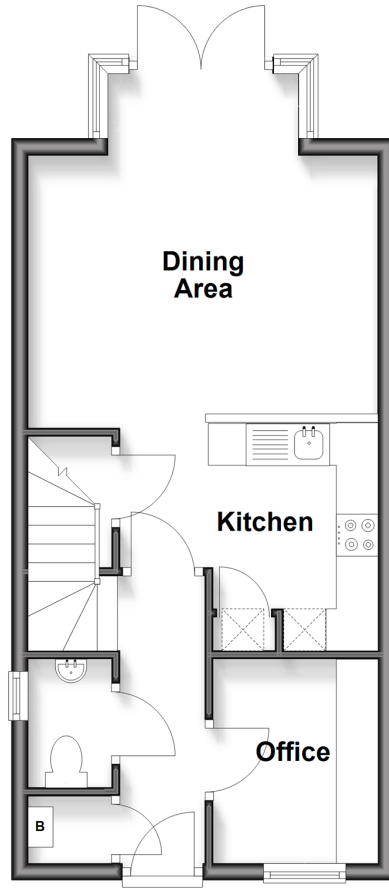
3x  2x  1x 

**Dawsum Close,
Aylesford, Kent, ME20**

Wards
Helping you move forwards

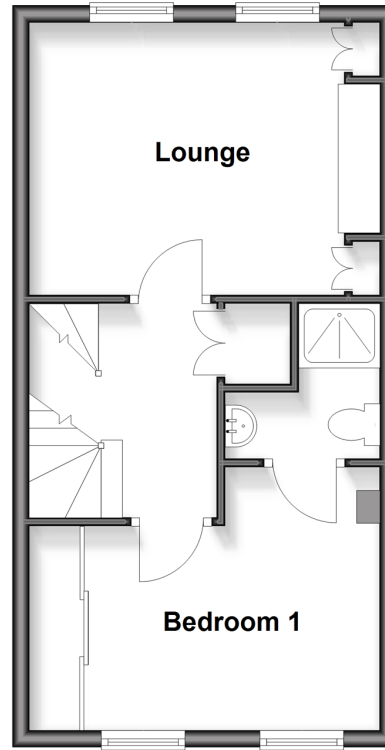
Ground Floor

Approx. 37.6 sq. metres (405.0 sq. feet)



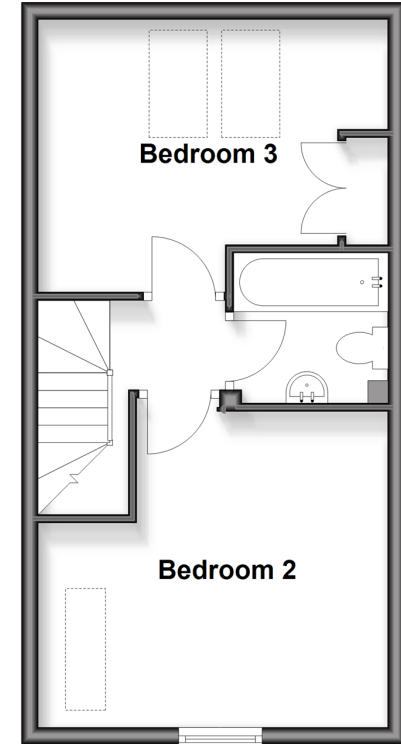
First Floor

Approx. 35.4 sq. metres (381.1 sq. feet)



Second Floor

Approx. 35.4 sq. metres (381.1 sq. feet)



Accommodation

GROUND FLOOR

Entrance Hall
Cloakroom
Office: 7'10 x 6'5 (2.39m x 1.96m)
Kitchen: 9'5 x 6'9 (2.87m x 2.06m)
Dining Area: 14'1 (4.30m) x 13'7 (4.14m) narrowing to 10'10 (3.30m)

FIRST FLOOR

Landing
Lounge: 13'5 x 10'10 (4.09m x 3.30m)
Bedroom 1: 13'8 into fitted wardrobes x 10'6 (4.17m x 3.20m) narrowing to 11'10 up to fitted wardrobes x 7'10 (3.61m x 2.39m)
En-Suite Shower Room

SECOND FLOOR

Landing
Bedroom 2: 13'7 (4.14m) narrowing to 9'4 (2.85m) x 12'10 (3.91m)
Bedroom 3: 13'7 (4.14m) x 11'0 (3.36m) narrowing to 9'0 (2.75m)
Bathroom

OUTSIDE

Driveway & Garage
Front & Rear Gardens



Main features

- Beautifully presented throughout - perfect to move into with nothing to do
- Spacious & sociable kitchen/dining area with sleek integrated Zanussi appliances
- Enjoy the luxury of both an en-suite shower room and a bathroom
- Work from home with ease in the fitted Sharps office saving the cost of commuting
- Relax in the sunny and secluded rear garden



Nearest Schools

Primary Schools: Allington Primary 0.7 miles, Aylesford Primary 1.3 miles, St Peter's C of E Primary 2.1 miles.
Secondary Schools: Aylesford School 1.3 miles, The Maplesden Noakes School 2.0 miles, St Simon Stock Catholic School 2.0 miles



Transport Information

Train Stations: Barming 1.1 miles, Aylesford 1.7 miles, Maidstone West 2.1 miles



Address

Dawsum Close, Aylesford, Kent, ME20



Directions

For directions to this property please contact us.



Wards
Helping you move forwards

Call Larkfield Branch 01732 847877 ■ wardsofkent.co.uk



■ Legal advice should be taken to verify fixtures/fittings, planning, alterations and/or lease details ■ Appliances & services are untested, dimensions are approximate and floor plans are not to scale
■ Through a Homewise Home For Life Plan people aged 60+ can secure this property for up to 59% less, by purchasing a Lifetime Lease.



12935335/20250509/RT/RT