



Price
£450,000

Freehold

5x  3x  1x 

**Friars View, Aylesford,
Kent, ME20**

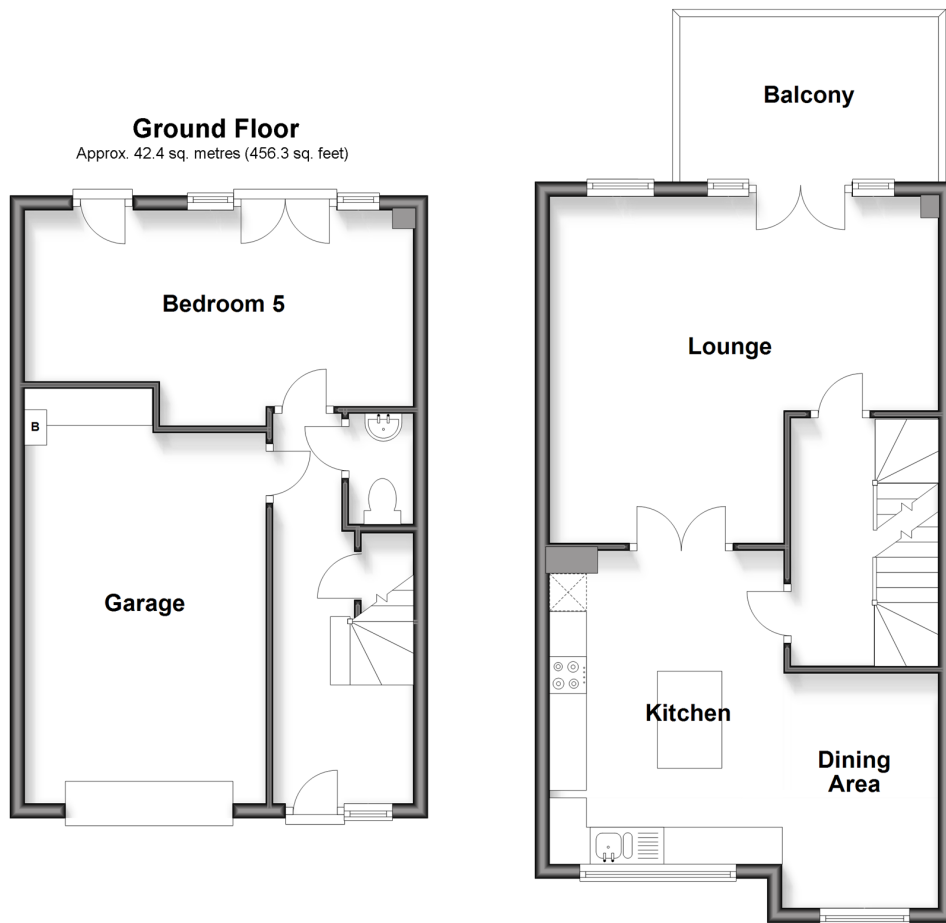
OVER 60?

Secure this property
for up to **59% less!**

Wards
Helping you move forwards

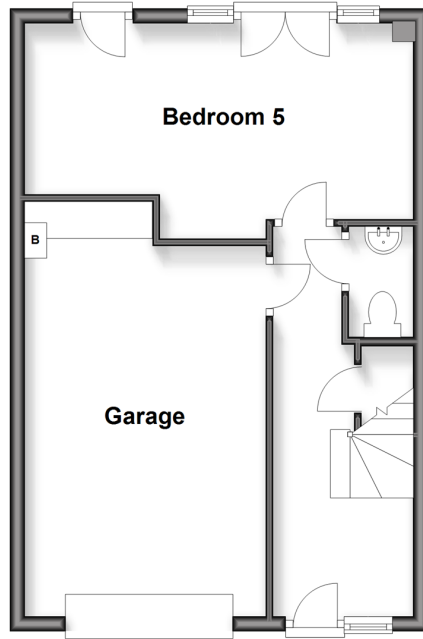
First Floor

Approx. 48.9 sq. metres (526.6 sq. feet)



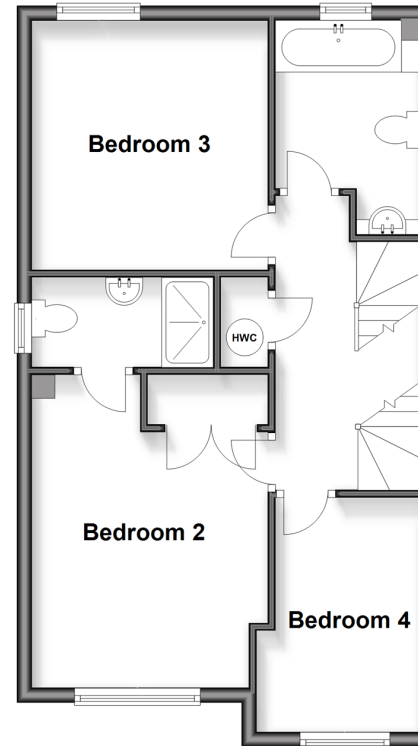
Ground Floor

Approx. 42.4 sq. metres (456.3 sq. feet)



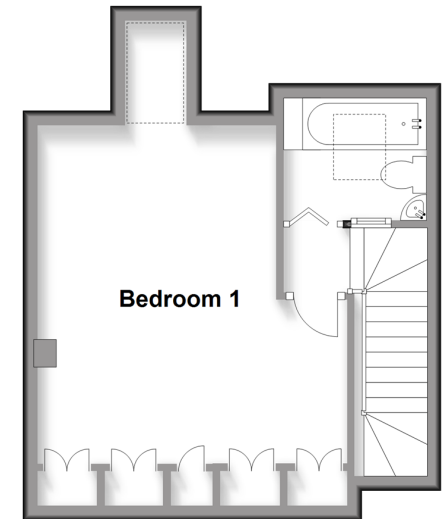
Second Floor

Approx. 49.0 sq. metres (527.3 sq. feet)



Third Floor

Approx. 28.6 sq. metres (308.1 sq. feet)



Accommodation

GROUND FLOOR

Entrance Hall

Cloakroom

Bedroom 5: 17'3 x 10'0 (5.26m x 3.05m)

FIRST FLOOR

Landing

Kitchen: 13'5 x 10'3 (4.09m x 3.13m)

Dining Area: 10'0 x 6'10 (3.05m x 2.08m)

Lounge: 17'3 at widest point x 15'11 (5.26m x 4.85m)

Balcony

SECOND FLOOR

Landing

Bedroom 2: 13'1 x 10'5 (3.99m x 3.18m)

En-Suite Shower Room

Bedroom 3: 11'0 x 10'5 (3.36m x 3.18m)

Bedroom 4: 9'10 x 7'5 (3.00m x 2.26m)

Bathroom

THIRD FLOOR

Landing

Bathroom 2

Bedroom 1: 15'5 x 13'6 (4.70m x 4.12m)

OUTSIDE

Driveway & Garage

Rear Garden



Main features

- Well presented throughout
- Super-sized property - offering versatile living spaces
- Spacious kitchen/dining area - perfect for entertaining
- Well reputed schools & great amenities within easy reach
- Commuting is easy with good road links and Aylesford rail station is only a short walk



Nearest Schools

Primary Schools: Ditton C of E Junior School 0.9 miles, Aylesford Primary 1.3 miles, St Peter's C of E Primary 1.4 miles. Secondary Schools: Aylesford School 1.3 miles, The Malling School 2.1 miles, Oakwood Park Grammar School 2.5 miles



Transport Information

Train Stations: Aylesford 0.2 miles, Barming 2.0 miles, Snodland 2.1 miles



Address

Friars View, Aylesford, Kent, ME20



Directions

For directions to this property please contact us.



Wards
Helping you move forwards

Call Larkfield Branch 01732 847877 ■ wardsofkent.co.uk



- Legal advice should be taken to verify fixtures/fittings, planning, alterations and/or lease details
- Appliances & services are untested, dimensions are approximate and floor plans are not to scale
- Through a Homewise Home For Life Plan people aged 60+ can secure this property for up to 59% less, by purchasing a Lifetime Lease.



12934799/20250218/CK/JT