



Price
£400,000

Freehold

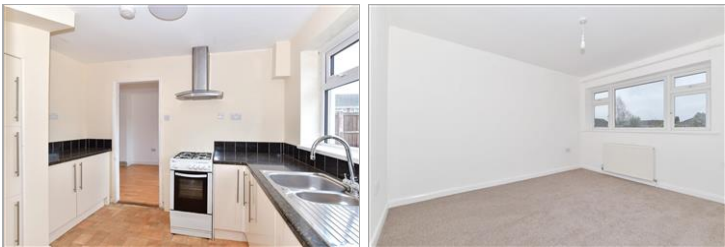
4x  2x  1x 

**Marsh Way, Larkfield,
Aylesford, Kent, ME20**

OVER 60?

Secure this property
for up to **59% less!**

Wards
Helping you move forwards



Main features

- **Spacious lounge/dining room - perfect for today's lifestyle**
- **Ground floor bedroom with an en-suite wet room offering flexibility to suit your needs**
- **Handy utility room**
- **Lovely lakeside walks & good leisure facilities nearby**
- **Great commuter links by road & rail**

Accommodation

GROUND FLOOR

Entrance Porch

Lounge/Dining Room: 22'2 (6.76m) x 15'10 (4.83m) narrowing to 8'3 (2.52m)

Kitchen: 10'4 x 8'1 (3.15m x 2.47m)

Utility Room: 10'0 x 6'9 (3.05m x 2.06m)

Bedroom 4: 14'4 x 10'0 (4.37m x 3.05m)

En-Suite Wet Room

FIRST FLOOR

Landing

Bedroom 1 : 12'1 x 9'10 (3.69m x 3.00m)

Bedroom 2: 10'2 x 8'3 (3.10m x 2.52m)

Bedroom 3: 7'3 x 6'8 (2.21m x 2.03m)

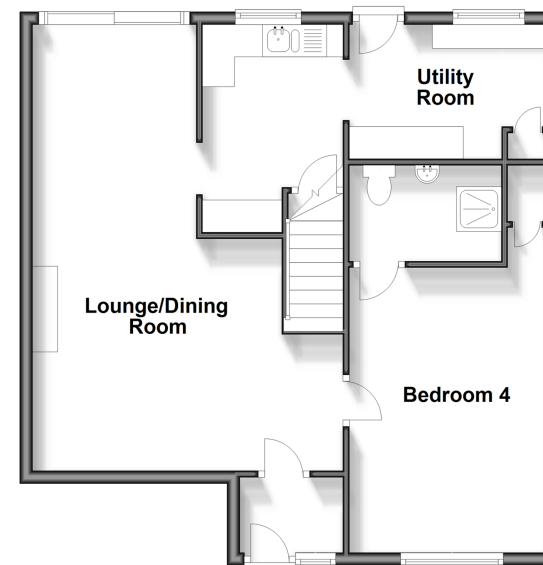
Bathroom

OUTSIDE

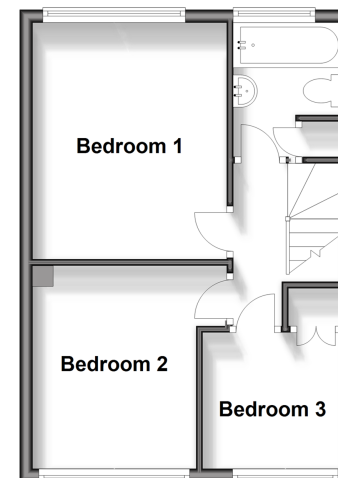
Driveway

Front & Rear Gardens

Ground Floor
Approx. 61.6 sq. metres (663.2 sq. feet)



First Floor
Approx. 33.5 sq. metres (360.7 sq. feet)



Call Larkfield - 01732 847877 ■ wardsofkent.co.uk

- Legal advice should be taken to verify fixtures/fittings, planning, alterations and/or lease details
- Appliances & services are untested, dimensions are approximate and floor plans are not to scale
- Through a Homewise Home For Life Plan people aged 60+ can secure this property for up to 59% less, by purchasing a Lifetime Lease.



12935344/20241231/CK/JT