



Price

£200,000

2x  2x  1x 

**Hillberry Park,
Wateringbury Road,
East Malling, Kent, ME19**

Wards
Helping you move forwards



Main features

- Well presented throughout with no forward chain
- Lovely kitchen with sleek integrated appliances
- Useful utility room - perfect for keeping the washing out of the way
- An en-suite shower room & a dressing area adds a touch of luxury
- Relax on the large decking area & potter in the private rear garden

Accommodation

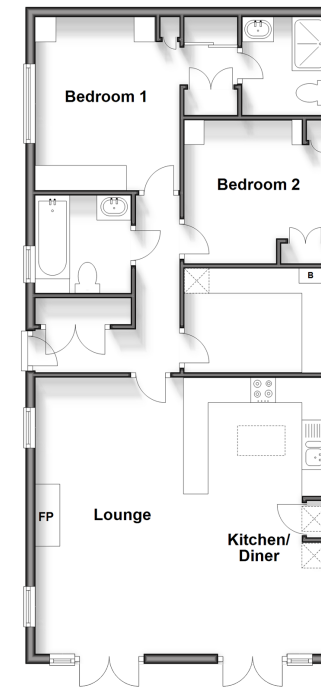
GROUND FLOOR

Entrance Hall
 Kitchen/Diner/Lounge: 19'5 x 18'2 (5.92m x 5.54m)
 Utility Room: 9'5 x 6'9 (2.87m x 2.06m)
 Bedroom 1: 11'3 x 9'5 (3.43m x 2.87m)
 Dressing Area: 7'1 into fitted wardrobes x 4'3 (2.16m x 1.30m)
 En-Suite Shower Room
 Bedroom 2: 9'5 x 9'5 up to fitted wardrobes (2.87m x 2.87m)
 Bathroom

OUTSIDE

Front & Side Decking Area
 Rear Garden
 Communal Parking

Ground Floor
 Approx. 75.6 sq. metres (814.1 sq. feet)



Call Larkfield - 01732 847877 ■ wardsofkent.co.uk

- If buying to let, the energy rating will need to be improved to at least 'E' rating before you can let the property
- Appliances & services are untested, dimensions are approximate and floor plans are not to scale

- Legal advice should be taken to verify fixtures/fittings, planning, alterations and/or lease details



12935309/20250319/RT/RT