



Price
£425,000

Freehold

4x  1x  1x 

**The Avenue,
Greenacres, Aylesford,
Kent, ME20**

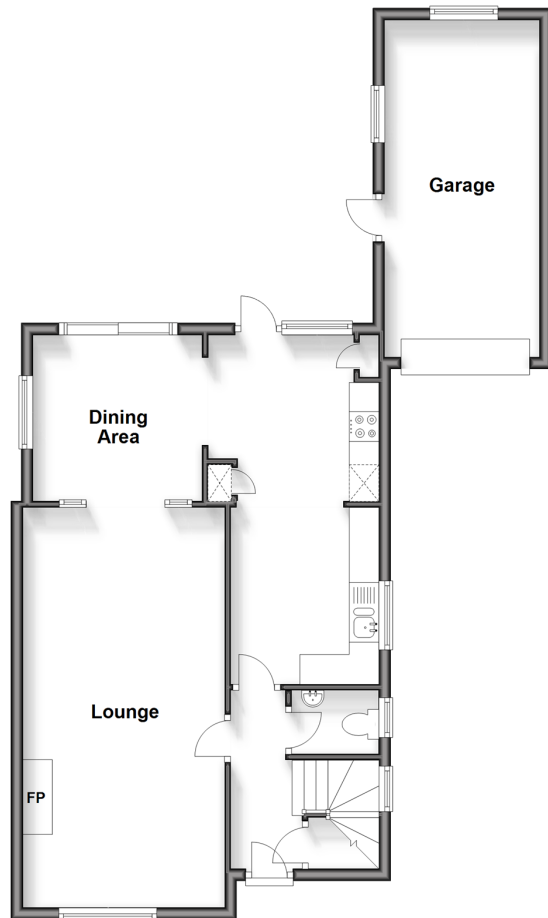
OVER 60?

Secure this property
for up to **59% less!**

Wards
Helping you move forwards

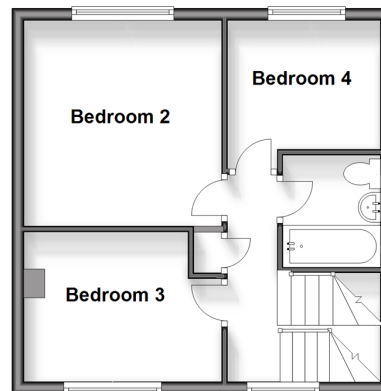
Ground Floor

Approx. 70.1 sq. metres (754.7 sq. feet)



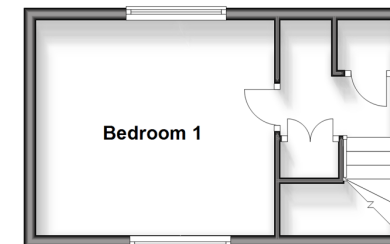
First Floor

Approx. 36.4 sq. metres (391.9 sq. feet)



Second Floor

Approx. 21.1 sq. metres (227.0 sq. feet)



Accommodation

GROUND FLOOR

Entrance Hall

Cloakroom

Kitchen: 9'5 x 9'1 (2.87m x 2.77m) plus 8'4 x 9'7 (2.54m x 2.92m)

Dining Area: 9'6 x 9'2 (2.90m x 2.80m)

Lounge: 21'10 x 11'0 (6.66m x 3.36m)

FIRST FLOOR

Landing

Bedroom 2: 11'5 x 10'9 (3.48m x 3.28m)

Bedroom 3: 10'9 x 8'1 (3.28m x 2.47m)

Bedroom 4: 8'9 x 8'2 (2.67m x 2.49m)

Bathroom

SECOND FLOOR

Landing

Bedroom 1: 12'6 x 12'5 (3.81m x 3.79m)

OUTSIDE

Driveway & Garage

Front & Rear Gardens



Main features

- Well presented throughout
- Sociable kitchen/dining area & spacious lounge - perfect for entertaining & bringing the family together
- Handy ground floor cloakroom for your convenience
- Lovely sunny & secluded rear garden
- Commuting is a breeze - walk to Aylesford rail station & easy access to the M20



Nearest Schools

Primary Schools: Aylesford Primary 0.3 miles, Ditton C of E Junior School 1.0 miles, St Peter's C of E Primary 1.3 miles. Secondary Schools: Aylesford School 0.3 miles, The Malling School 2.2 miles, St Augustine Academy 2.2 miles



Transport Information

Train Stations: Barming 1.3 miles, West Malling 2.3 miles, Maidstone Barracks 2.3 miles



Address

The Avenue, Greenacres, Aylesford, Kent, ME20



Directions

For directions to this property please contact us.



Call Larkfield Branch 01732 847877 ■ wardsofkent.co.uk



- Legal advice should be taken to verify fixtures/fittings, planning, alterations and/or lease details
- Appliances & services are untested, dimensions are approximate and floor plans are not to scale
- Through a Homewise Home For Life Plan people aged 60+ can secure this property for up to 59% less, by purchasing a Lifetime Lease.



12934941/20250104/JT/JT