



Guide Price
£375,000

Freehold

3x  1x  1x 

**The Ferns, Larkfield,
Aylesford, Kent, ME20**

OVER 60?

Secure this property
for up to **59% less!**

Wards
Helping you move forwards



Main features

- Set on the popular Trees development
- Sociable kitchen/dining area - great for today's lifestyle
- Useful ground floor cloakroom
- Perfect location for commuters - easy access to the M20 & rail links
- Excellent amenities, schools & leisure facilities close by

Accommodation

GROUND FLOOR

Entrance Hall

Cloakroom

Lounge: 22'2 x 11'6 (6.76m x 3.51m)

Kitchen: 10'2 x 7'11 (3.10m x 2.41m)

Dining Area: 18'7 x 9'9 (5.67m x 2.97m)

Utility: 7'8 x 5'1 (2.34m x 1.55m)

FIRST FLOOR

Landing

Bedroom 1: 11'5 x 10'9 (3.48m x 3.28m)

Bedroom 2: 10'10 x 9'0 (3.30m x 2.75m)

Bedroom 3: 8'9 x 7'4 (2.67m x 2.24m)

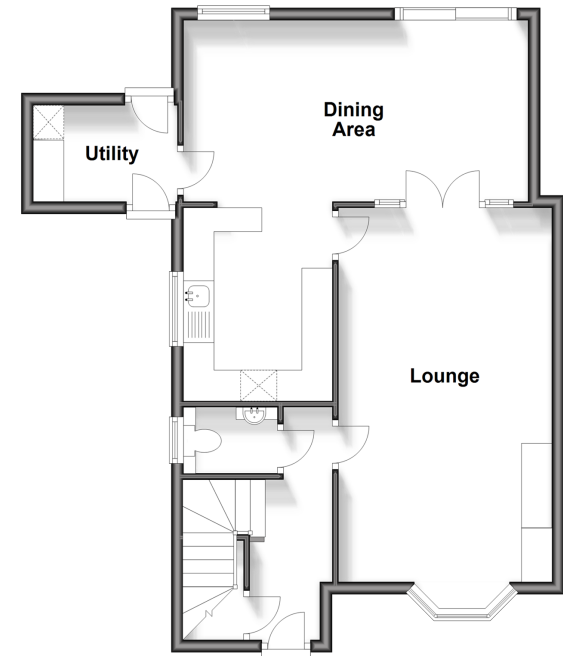
Bathroom

OUTSIDE

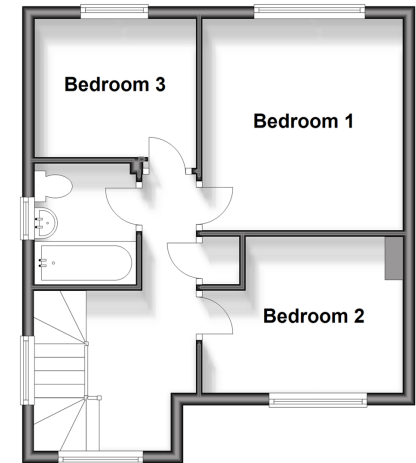
Driveway

Front & Rear Gardens

Ground Floor
Approx. 59.8 sq. metres (643.5 sq. feet)



First Floor
Approx. 39.3 sq. metres (423.2 sq. feet)



Call Larkfield - 01732 847877 ■ wardsof Kent.co.uk

- Legal advice should be taken to verify fixtures/fittings, planning, alterations and/or lease details
- Appliances & services are untested, dimensions are approximate and floor plans are not to scale
- Through a Homewise Home For Life Plan people aged 60+ can secure this property for up to 59% less, by purchasing a Lifetime Lease.



12935114/20250102/JT/JT