



Guide Price
£750,000

Freehold

4x  1x  3x 

**The Grange, East
Malling, Kent, ME19**

OVER 60?

Secure this property
for up to **59% less!**

Wards
Helping you move forwards



Main features

- Extended and set in a desirable Close
- Lovely village location
- Set on a very generous plot of 0.7394 acres
- Large kitchen/diner - perfect for today's lifestyle
- Work from home with ease in the downstairs play room

Accommodation

GROUND FLOOR

Entrance Hall
Lobby
Cloakroom
Play Room: 12'9 x 6'11 (3.89m x 2.11m)
Lounge: 14'10 x 12'1 (4.52m x 3.69m)
Kitchen/Diner: 26'3 x 11'7 (8.01m x 3.53m)
Dining Room: 12'9 x 5'1 (3.89m x 1.55m)
Conservatory: 13'4 x 11'8 (4.07m x 3.56m)

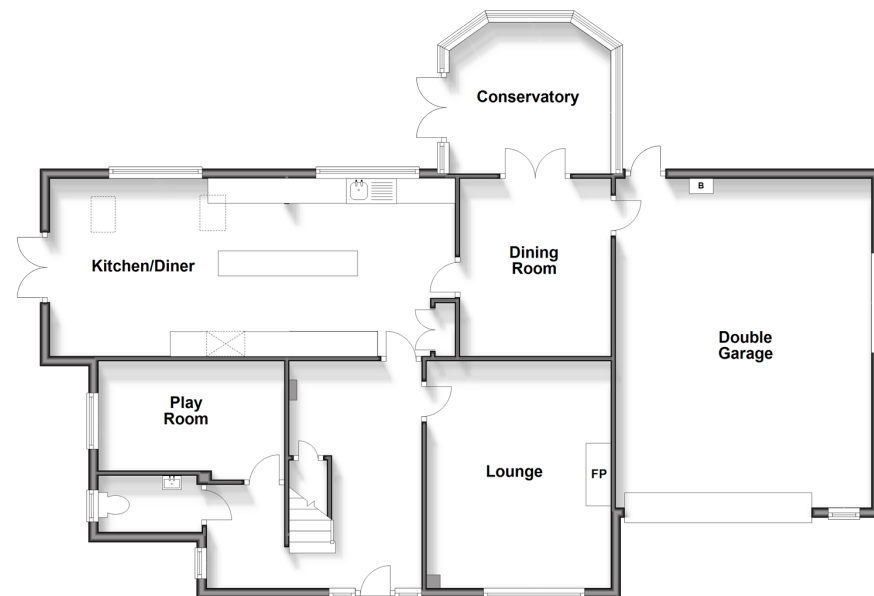
FIRST FLOOR

Landing
Bedroom 1: 13'10 x 10'11 (4.22m x 3.33m)
Bedroom 4: 9'9 x 9'3 (2.97m x 2.82m)
Wet Room
Bedroom 3: 10'11 x 7'5 (3.33m x 2.26m)
Bedroom 2: 12'6 x 10'11 (3.81m x 3.33m)
Eaves

OUTSIDE

Driveway
Double Garage: 21'8 x 16'7 (6.61m x 5.06m)
Front and Rear Gardens

Ground Floor
Approx. 128.8 sq. metres (1386.6 sq. feet)

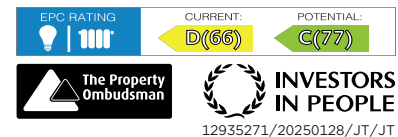


First Floor
Approx. 54.9 sq. metres (590.9 sq. feet)



Call Larkfield - 01732 847877 ■ wardsof Kent.co.uk

- Legal advice should be taken to verify fixtures/fittings, planning, alterations and/or lease details
- Appliances & services are untested, dimensions are approximate and floor plans are not to scale
- Through a Homewise Home For Life Plan people aged 60+ can secure this property for up to 59% less, by purchasing a Lifetime Lease.



12935271/20250128/JT/JT