



Price

£240,000

Leasehold

1x  1x  1x 

Preston Hall, Culpeper
Road, Aylesford, Kent,
ME20

OVER 60?

Secure this property
for up to **59% less!**

Wards
Helping you move forwards



Main features

- Beautifully presented throughout.
- Unique opportunity to purchase part of the historic Preston Hall
- Grade II listed offering an abundance of character and charm
- Sociable kitchen/dining/living area - ideal for entertaining
- Picturesque communal gardens allowing you to fully unwind

Accommodation

GROUND FLOOR

Kitchen/Dining/Living Area: 17'10 x 12'8
(5.44m x 3.86m)

Lobby

Bedroom : 12'8 into fitted wardrobes
x 11'1 (3.86m x 3.38m)

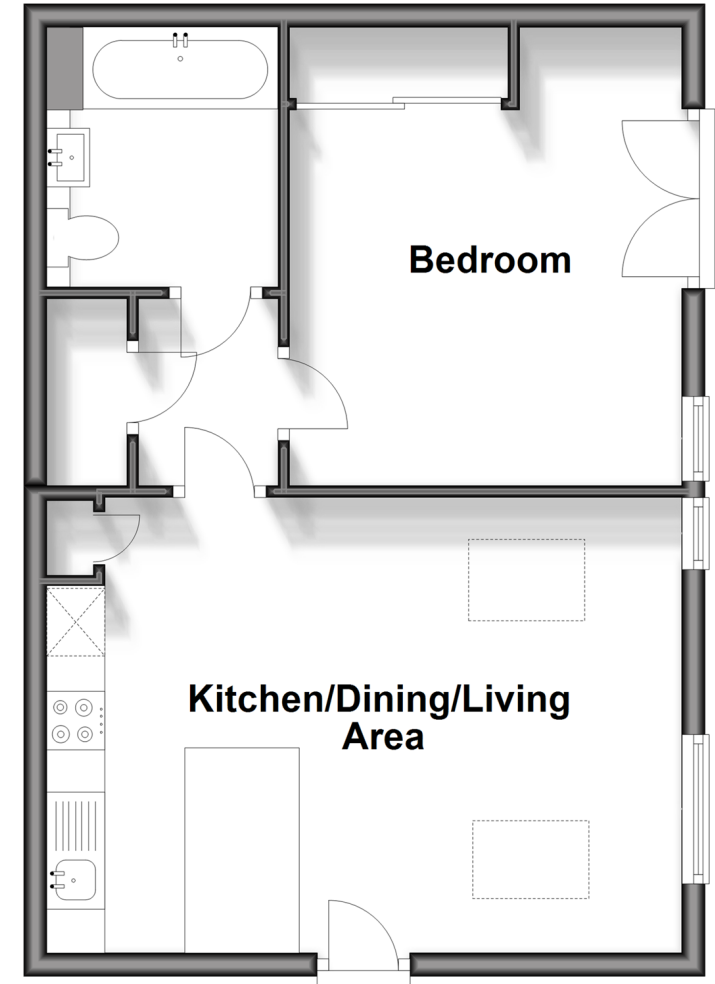
Bathroom

OUTSIDE

2 Allocated Parking Spaces
Communal Gardens

Ground Floor

Approx. 43.1 sq. metres (464.4 sq. feet)



Call Larkfield - 01732 847877 ■ wardsof Kent.co.uk

- Legal advice should be taken to verify fixtures/fittings, planning, alterations and/or lease details
- Appliances & services are untested, dimensions are approximate and floor plans are not to scale
- Through a Homewise Home For Life Plan people aged 60+ can secure this property for up to 59% less, by purchasing a Lifetime Lease.



12935266/20241008/JT/JT