



Price

£225,000

2x  2x  1x 

Hillberry Park,
Wateringbury Road,
East Malling, Kent, ME19

Wards
Helping you move forwards



Main features

- Beautifully presented throughout - electric awning included to the rear decking area
- Enjoy the sun in your own private & secluded garden
- Exclusive park home community for the over 50's & pets are allowed
- Luxury bathroom - relax in the jacuzzi bath
- Escape to the country & enjoy the peaceful location

Accommodation

GROUND FLOOR

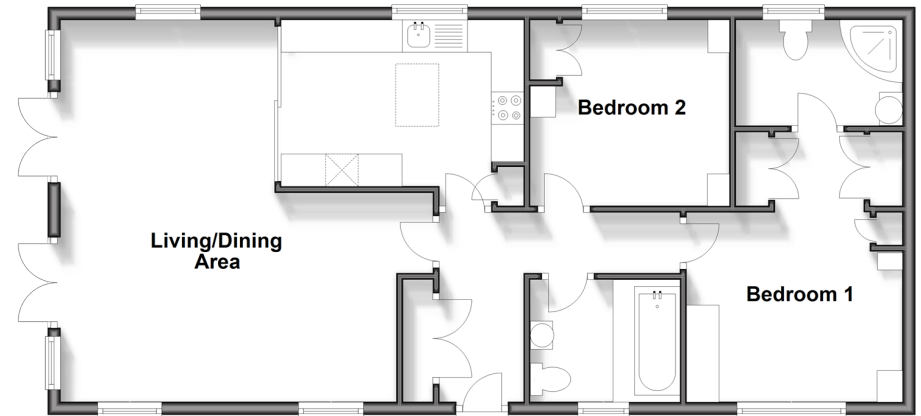
- Entrance Hall
- Living/Dining Area: 19'4 (5.90m) x 18'8 (5.69m) narrowing to 10'9 (3.28m)
- Kitchen: 12'3 x 9'5 (3.74m x 2.87m)
- Bedroom 1: 10'10 x 9'5 (3.30m x 2.87m)
- Dressing Area
- En-Suite Shower Room
- Bedroom 2: 10'0 x 9'5 (3.05m x 2.87m)
- Bathroom

OUTSIDE

- Communal Parking
- Front & Side Decking Area
- Side & Rear Gardens
- 2 Sheds

Ground Floor

Approx. 76.3 sq. metres (820.9 sq. feet)



Call Larkfield - 01732 847877 ■ wardsofkent.co.uk

- If buying to let, the energy rating will need to be improved to at least 'E' rating before you can let the property
- Appliances & services are untested, dimensions are approximate and floor plans are not to scale

- Legal advice should be taken to verify fixtures/fittings, planning, alterations and/or lease details



12935222/20240729/CK/RT