



OVER 60?

Secure this property
for up to **59% less!**

Price
£325,000

Freehold

2x  1x  1x 

**Copse Hill, Leybourne,
West Malling, Kent,
ME19**

Wards
Helping you move forwards



Main features

- Well presented throughout
- No parking worries with 2 allocated spaces for your convenience
- The conservatory adds an extra dimension - currently used as a utility space
- Walk to nearby West Malling with good shops, pubs & restaurants
- Good transport links by road/rail

Accommodation

GROUND FLOOR

Entrance Porch

Lounge: 14'3 x 11'9 (4.35m x 3.58m)

Kitchen: 11'7 x 10'9 (3.53m x 3.28m)

Conservatory: 11'8 x 5'7 (3.56m x 1.70m)

FIRST FLOOR

Landing

Bedroom 1: 11'8 x 10'9 (3.56m x 3.28m)

Bedroom 2: 11'1 x 6'3 (3.38m x 1.91m)

Bathroom

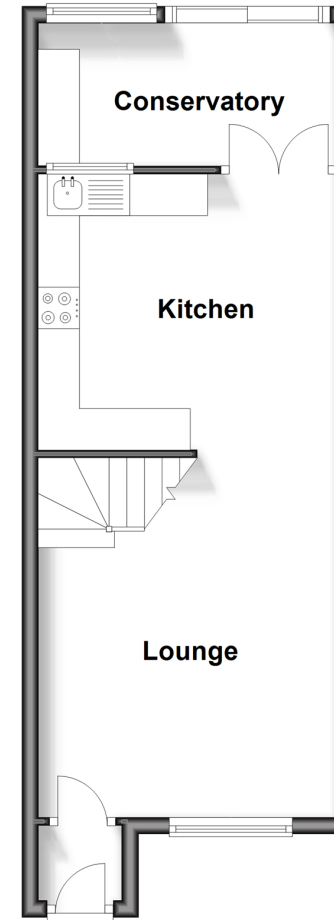
OUTSIDE

Front & Rear Gardens

2 Allocated Parking Spaces

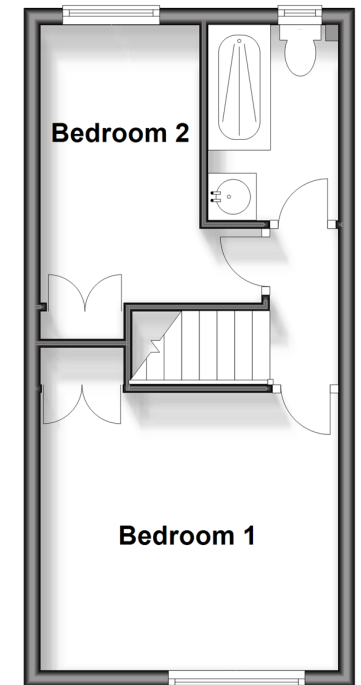
Ground Floor

Approx. 35.6 sq. metres (383.6 sq. feet)



First Floor

Approx. 28.1 sq. metres (302.9 sq. feet)



Call Larkfield - 01732 847877 ■ wardsof Kent.co.uk

- Legal advice should be taken to verify fixtures/fittings, planning, alterations and/or lease details
- Appliances & services are untested, dimensions are approximate and floor plans are not to scale
- Through a Homewise Home For Life Plan people aged 60+ can secure this property for up to 59% less, by purchasing a Lifetime Lease.



12935208/20240701/CK/JT