



Price
£535,000

Freehold

4x  2x  2x 

**Macaulay Close,
Larkfield, Aylesford,
Kent, ME20**

OVER 60?

Secure this property
for up to **59% less!**

Wards
Helping you move forwards



Main features

- Beautifully presented with the luxury of an en-suite shower room
- Large kitchen with integrated appliances making cooking pleasure
- Useful ground floor cloakroom
- Not overlooked - pleasant green view to the front & rear of the home
- Well reputed schools & good amenities within easy reach

Accommodation

GROUND FLOOR

Entrance Hall

Cloakroom

Lounge: 16'7 x 10'10 (5.06m x 3.30m)

Dining Room: 10'10 x 10'6 (3.30m x 3.20m)

Kitchen: 14'2 x 10'5 (4.32m x 3.18m)

FIRST FLOOR

Landing

Bedroom 1: 15'6 x 11'1 (4.73m x 3.38m)

En-Suite Shower Room

Bedroom 2: 12'4 (3.76m) x 10'10 (3.30m)
narrowing to 7'10 (2.39m)

Bedroom 3: 12'10 x 7'8 (3.91m x 2.34m)

Bedroom 4: 9'7 x 8'0 (2.92m x 2.44m)

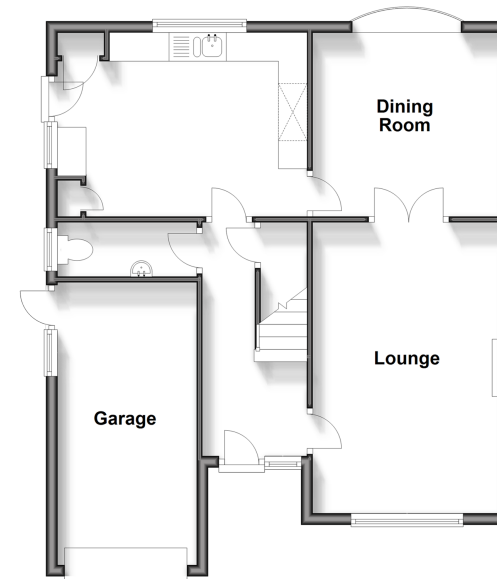
Bathroom

OUTSIDE

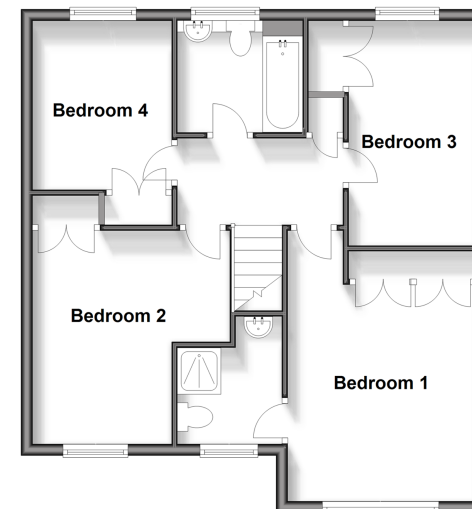
Driveway & Garage

Front & Rear Gardens

Ground Floor
Approx. 65.4 sq. metres (704.1 sq. feet)



First Floor
Approx. 61.4 sq. metres (661.4 sq. feet)



Call Larkfield - 01732 847877 ■ wardsof Kent.co.uk

- Legal advice should be taken to verify fixtures/fittings, planning, alterations and/or lease details
- Appliances & services are untested, dimensions are approximate and floor plans are not to scale
- Through a Homewise Home For Life Plan people aged 60+ can secure this property for up to 59% less, by purchasing a Lifetime Lease.



12935176/20240812/HJ20/RT