



Price
£360,000

Freehold

3x  1x  1x 

**Harvest Ridge,
Leybourne, Kent, ME19**

OVER 60?

Secure this property
for up to **59% less!**

Wards
Helping you move forwards



Main features

- Chain free - makes buying easier
- All bedrooms are a good size - no box rooms here
- The garden catches the sun - perfect for relaxing in the summer months
- Not overlooked with an open green view to the rear of the property
- Enjoy the tucked away location - set in a quiet Close

Accommodation

GROUND FLOOR

Entrance Porch

Lounge: 15'8 (4.78m) x 10'6 at widest point (3.20m) narrowing to 8'5 (2.57m)

Dining Area: 8'10 x 8'5 (2.69m x 2.57m)

Kitchen: 9'10 x 8'7 (3.00m x 2.62m)

FIRST FLOOR

Landing

Bedroom 1: 14'2 x 9'6 (4.32m x 2.90m)

Bedroom 2: 10'2 x 9'6 (3.10m x 2.90m)

Bedroom 3: 9'2 x 8'10 (2.80m x 2.69m)

Bathroom

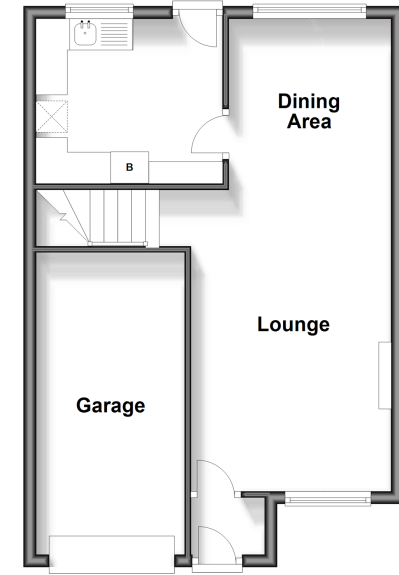
OUTSIDE

Driveway & Garage

Front & Rear Gardens

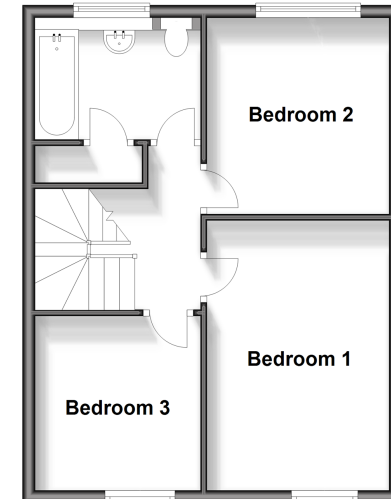
Ground Floor

Approx. 46.4 sq. metres (499.9 sq. feet)



First Floor

Approx. 42.9 sq. metres (462.0 sq. feet)



Call Larkfield - 01732 847877 ■ wardsof Kent.co.uk

- Legal advice should be taken to verify fixtures/fittings, planning, alterations and/or lease details
- Appliances & services are untested, dimensions are approximate and floor plans are not to scale
- Through a Homewise Home For Life Plan people aged 60+ can secure this property for up to 59% less, by purchasing a Lifetime Lease.



12932289/20240603/CK/RT