



Price
£550,000

Freehold

4x  3x  1x 

**London Road,
Leybourne, West
Malling, Kent, ME19**

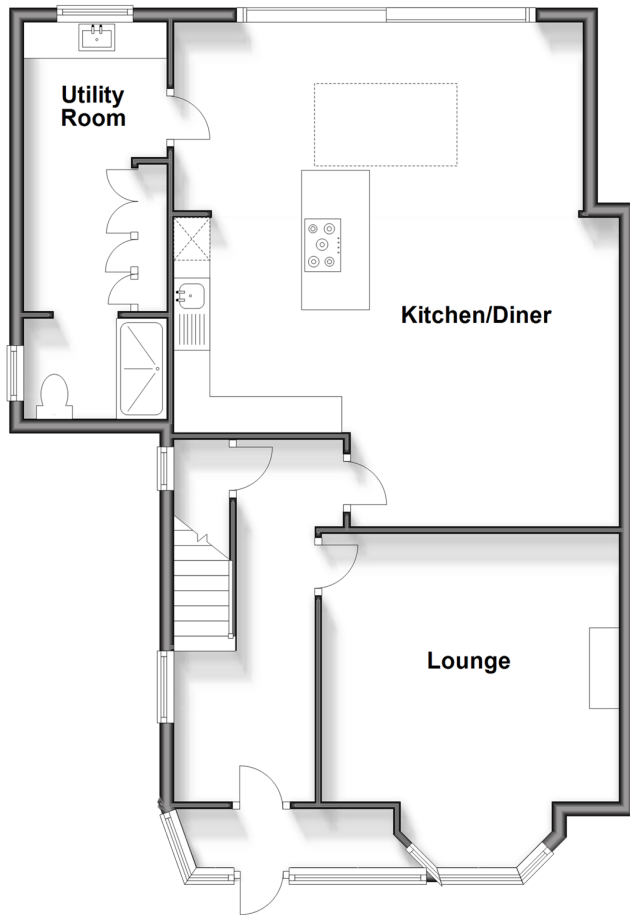
OVER 60?

Secure this property
for up to **59% less!**

Wards
Helping you move forwards

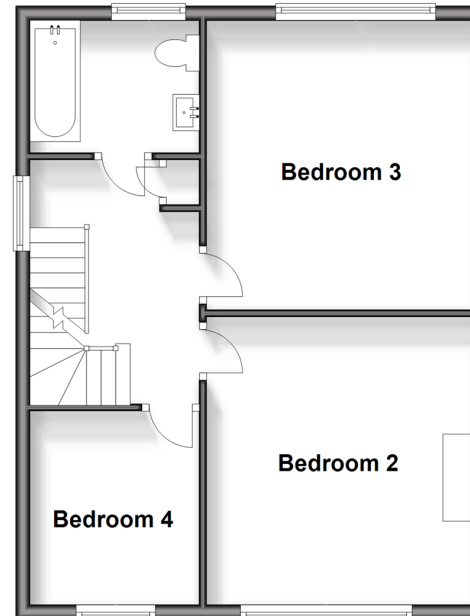
Ground Floor

Approx. 81.6 sq. metres (877.9 sq. feet)



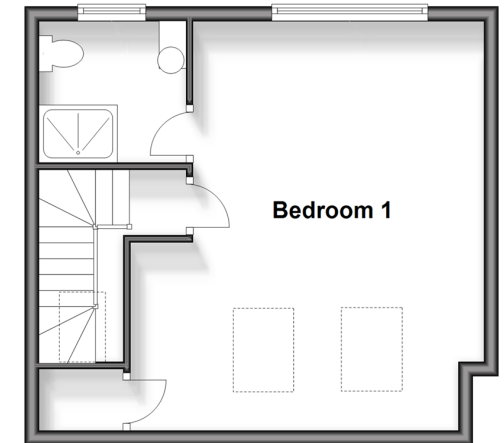
First Floor

Approx. 50.0 sq. metres (538.6 sq. feet)



Second Floor

Approx. 34.3 sq. metres (369.6 sq. feet)



Accommodation

GROUND FLOOR

Entrance Porch

Entrance Hall

Lounge: 15'9 into bay x 13'6 (4.80m x 4.12m)

Kitchen/Diner: 22'3 (6.79m) x 20'7 (6.28m)
narrowing to 18'8 (5.69m)

Utility Room: 13'1 x 6'6 (3.99m x 1.98m)

Shower Room

FIRST FLOOR

Landing

Bedroom 2: 13'6 x 12'4 (4.12m x 3.76m)

Bedroom 3: 12'8 x 12'3 (3.86m x 3.74m)

Bedroom 4: 8'4 x 7'8 (2.54m x 2.34m)

Bathroom

SECOND FLOOR

Landing

Bedroom 1: 18'7 x 13'0 (5.67m x 3.97m)

En-Suite Shower Room

OUTSIDE

Driveway

Front & Rear Gardens



Main features

- Well presented throughout
- Stunning kitchen/diner - great for bringing the family together & entertaining
- A bathroom or shower room on each floor makes life easy - ideal for the largest of families
- Lovely long garden to enjoy - perfect for children or keen gardeners
- Excellent commuter links by road & rail close by

Nearest Schools

Primary Schools: St James the Great Primary and Nursery School 0.5 miles, Brookfield Junior School 0.9 miles, Lunsford Primary 0.9 miles. Secondary Schools: The Malling School 1.1 miles, Grange Park School 1.9 miles, Aylesford School 1.9 miles

Transport Information

Train Stations: West Malling 1.2 miles, East Malling 1.5 miles, Aylesford 1.7 miles

Address

London Road, Leybourne, West Malling, Kent, ME19

Directions

For directions to this property please contact us.



Wards
Helping you move forwards

Call Larkfield Branch 01732 847877 ■ wardsofkent.co.uk



- Legal advice should be taken to verify fixtures/fittings, planning, alterations and/or lease details
- Appliances & services are untested, dimensions are approximate and floor plans are not to scale
- Through a Homewise Home For Life Plan people aged 60+ can secure this property for up to 59% less, by purchasing a Lifetime Lease.

EPC RATING

CURRENT:	POTENTIAL:
D(63)	B(33)

12935001/20240529/CK/JT