



OVER 60?

Secure this property
for up to **59% less!**

Price

£410,000

Freehold

3x  1x  1x 

**Baywell, Leybourne,
Kent, ME19**

Wards
Helping you move forwards



Main features

- Well presented throughout
- Sociable lounge/diner - ideal for entertaining
- The bright conservatory adds an extra dimension to the home
- Heated flooring to the bathroom, kitchen & conservatory adds luxury
- Good location for commuting - walk to rail station & the M20 is nearby

Accommodation

GROUND FLOOR

Entrance Porch

Lounge/Diner: 20'8 x 10'5 (6.30m x 3.18m)

Kitchen: 9'10 x 7'1 (3.00m x 2.16m)

Conservatory: 11'9 x 7'11 (3.58m x 2.41m)

FIRST FLOOR

Landing

Bedroom 1: 10'3 x 9'4 (3.13m x 2.85m)

Bedroom 2: 10'2 x 9'4 (3.10m x 2.85m)

Bedroom 3: 8'10 x 6'5 (2.69m x 1.96m)

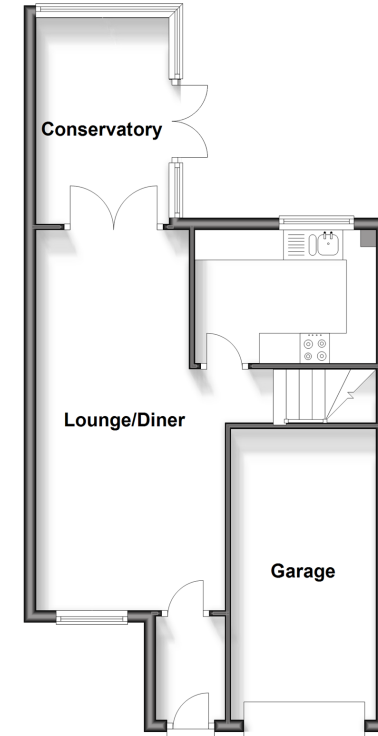
Bathroom

OUTSIDE

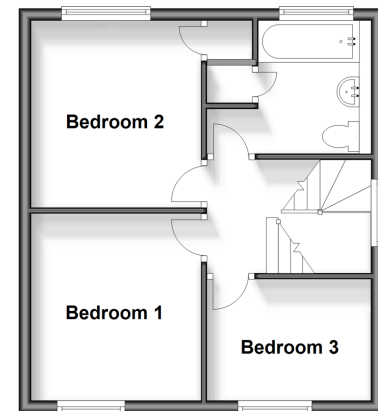
Driveway & Garage

Front & Rear Gardens

Ground Floor
Approx. 51.0 sq. metres (548.7 sq. feet)



First Floor
Approx. 36.3 sq. metres (390.7 sq. feet)



Call Larkfield - 01732 847877 ■ wardsof Kent.co.uk

- Legal advice should be taken to verify fixtures/fittings, planning, alterations and/or lease details
- Appliances & services are untested, dimensions are approximate and floor plans are not to scale
- Through a Homewise Home For Life Plan people aged 60+ can secure this property for up to 59% less, by purchasing a Lifetime Lease.



12935129/20240722/CK/JT