



Price
£600,000

Freehold

4x  2x  2x 

**Lunsford Lane, Larkfield,
Kent, ME20**

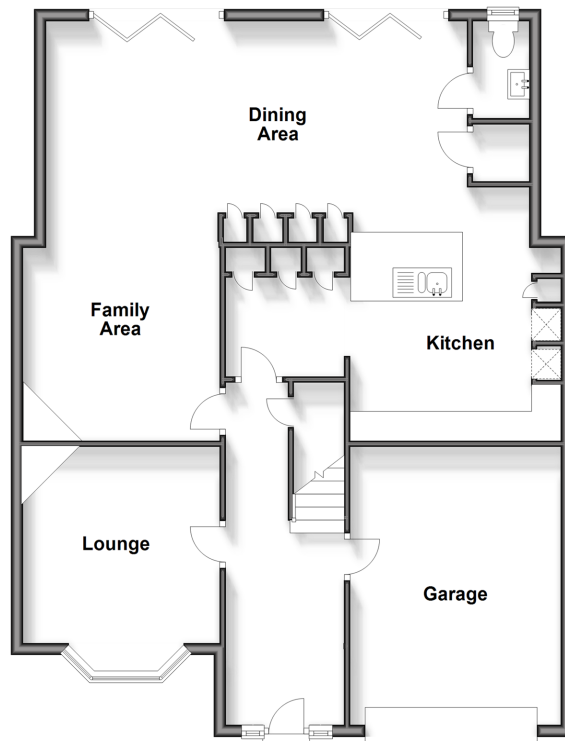
OVER 60?

Secure this property
for up to **59% less!**

Wards
Helping you move forwards

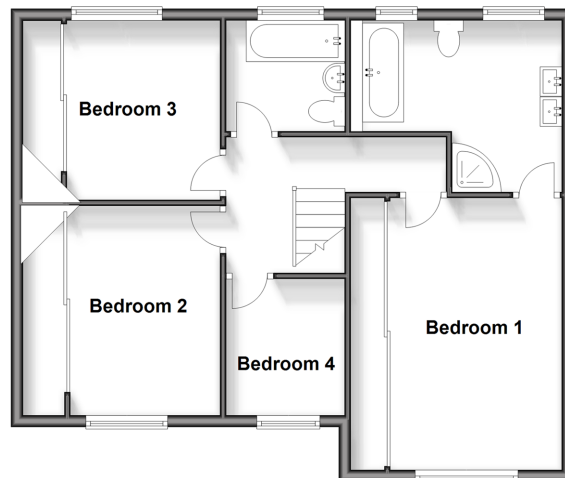
Ground Floor

Approx. 101.4 sq. metres (1091.3 sq. feet)



First Floor

Approx. 64.8 sq. metres (697.7 sq. feet)



Accommodation

GROUND FLOOR

Entrance Hall

Cloakroom

Lounge: 13'1 x 11'0 (3.99m x 3.36m)

Family Area: 11'0 x 10'0 (3.36m x 3.05m)

Dining Area: 18'3 x 9'11 (5.57m x 3.02m)

Kitchen: 14'9 x 11'1 (4.50m x 3.38m)

FIRST FLOOR

Landing

Bedroom 1: 15'8 x 11'9 (4.78m x 3.58m)

En-Suite Bath/Shower Room: 11'6 x 9'7 (3.51m x 2.92m)

Bedroom 2: 10'2 x 9'2 (3.10m x 2.80m)

Bedroom 3: 12'3 x 9'2 (3.74m x 2.80m)

Bedroom 4: 7'8 x 6'6 (2.34m x 1.98m)

Bathroom

OUTSIDE

Driveway & Garage

Rear Garden

Cabin/Bar: 14'0 x 10'11 (4.27m x 3.33m)

Swimming Pool

Shed



Main features

- Immaculate condition throughout
- Stunning kitchen/dining/family area with bi-fold doors allowing the natural light to flood in
- Lovely sunny & secluded garden with wonderful views of the lake
- An en-suite bath/shower room & a bathroom adds luxury to the home
- Great commuter links by road & rail

Nearest Schools

Primary Schools: Lunsford Primary 1.2 miles, Leybourne, St Peter and St Paul C of E Voluntary Aided Primary 1.2 miles, Brookfield Junior School 1.2 miles

Secondary Schools: Holmesdale Technology College 1.3

Transport Information

Train Stations: New Hythe 1.3 miles, East Malling 1.7 miles, Snodland 2.0 miles

Address

Lunsford Lane, Larkfield, Kent, ME20

Directions

For directions to this property please contact us.



Wards
Helping you move forwards

Call Larkfield Branch 01732 847877 ■ wardsofKent.co.uk



- Legal advice should be taken to verify fixtures/fittings, planning, alterations and/or lease details
- Appliances & services are untested, dimensions are approximate and floor plans are not to scale
- Through a Homewise Home For Life Plan people aged 60+ can secure this property for up to 59% less, by purchasing a Lifetime Lease.

EPC RATING

CURRENT:	POTENTIAL:
D(62)	C(78)

12935107/20240429/CK/JT