



**Guide Price**  
**£525,000**

**Freehold**

3x  2x  1x 

**Reeves Court, East  
Malling, Kent, ME19**

**OVER 60?**

Secure this property  
for up to **59% less!**

*Wards*  
Helping you move forwards





## Main features

- Immaculate home set on the popular Bradbourne Fields development
- The bright conservatory adds an extra dimension to the home
- Enjoy the luxury of both an en-suite shower room & a bathroom
- Handy ground floor cloakroom
- Good schools & shops within walking distance

## Accommodation

### GROUND FLOOR

- Entrance Hall
- Cloakroom
- Kitchen: 10'1 x 9'1 (3.08m x 2.77m)
- Lounge: 15'11 x 10'9 (4.85m x 3.28m)
- Dining Area: 10'6 x 8'9 (3.20m x 2.67m)
- Conservatory: 12'11 x 9'7 (3.94m x 2.92m)

### FIRST FLOOR

- Landing
- Bedroom 1: 12'10 x 11'6 (3.91m x 3.51m)
- En-Suite Shower Room
- Bedroom 2: 11'2 x 10'1 (3.41m x 3.08m)
- Bedroom 3: 10'6 x 6'10 (3.20m x 2.08m)
- Bathroom

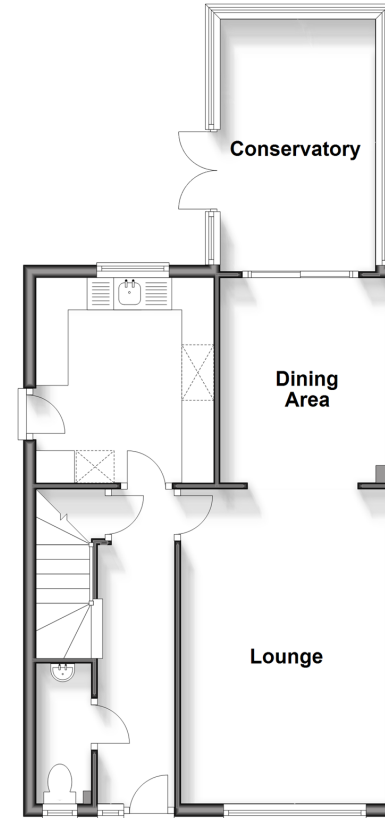
### OUTSIDE

- Driveway & Garage
- Front & Rear Gardens

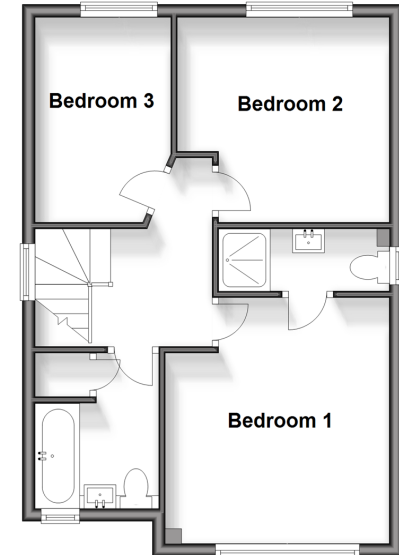
Call Larkfield - 01732 847877 ■ [wardsof Kent.co.uk](http://wardsof Kent.co.uk)

- Legal advice should be taken to verify fixtures/fittings, planning, alterations and/or lease details
- Appliances & services are untested, dimensions are approximate and floor plans are not to scale
- Through a Homewise Home For Life Plan people aged 60+ can secure this property for up to 59% less, by purchasing a Lifetime Lease.

**Ground Floor**  
Approx. 55.3 sq. metres (594.8 sq. feet)



**First Floor**  
Approx. 44.1 sq. metres (474.6 sq. feet)



12934460/20240617/JT/JT