



Price
£460,000

Freehold

4x  2x  1x 

**Firs Close, Aylesford,
Kent, ME20**

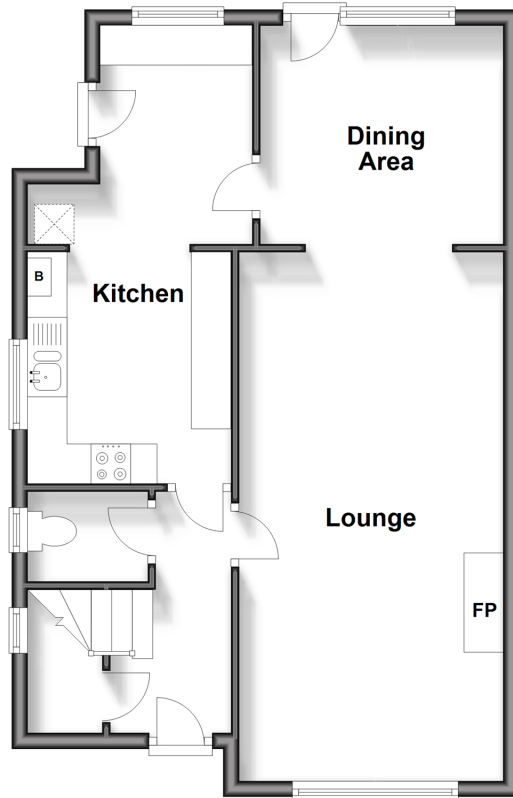
OVER 60?

Secure this property
for up to **59% less!**

Wards
Helping you move forwards

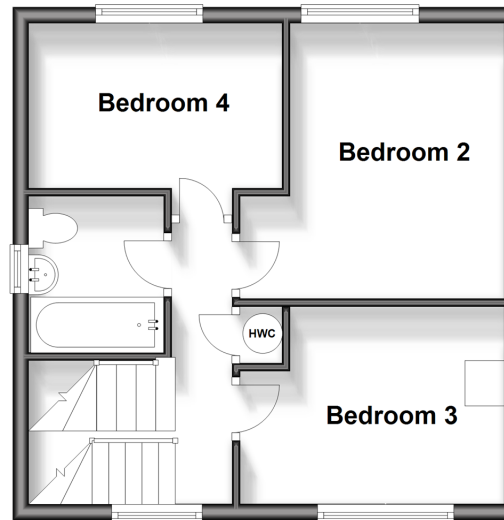
Ground Floor

Approx. 53.8 sq. metres (578.9 sq. feet)



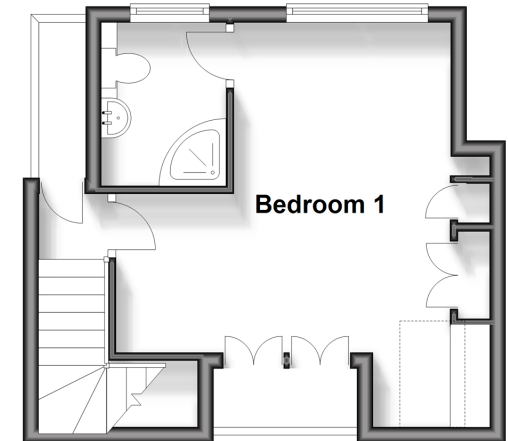
First Floor

Approx. 36.4 sq. metres (392.2 sq. feet)



Second Floor

Approx. 24.4 sq. metres (262.7 sq. feet)



Accommodation

GROUND FLOOR

Entrance Hall
Cloakroom
Lounge: 22'0 x 11'0 (6.71m x 3.36m)
Dining Area: 9'10 x 8'11 (3.00m x 2.72m)
Kitchen: 9'7 x 8'4 (2.92m x 2.54m)
Utility Area

FIRST FLOOR

Landing
Bedroom 2: 11'4 x 8'10 (3.46m x 2.69m)
Bedroom 3: 11'0 into fitted wardrobes x 8'2 (3.36m x 2.49m)
Bedroom 4: 10'8 x 7'0 (3.25m x 2.14m)
Bathroom

SECOND FLOOR

Landing
Bedroom 1: 13'6 x 13'0 (4.12m x 3.97m)
En-Suite Shower Room

OUTSIDE

Driveway & Garage
Front & Rear Gardens



Main features

- Hugely extended home - ideal for a growing family
- Bedroom 1 has the luxury of bespoke wardrobes & an en-suite shower room to enjoy
- Cooking will be a pleasure in the lovely sized kitchen & bring the family together & entertain in style in the spacious lounge/dining area
- Handy ground floor cloakroom adds convenience
- Landscaped rear garden catches the sun all day



Nearest Schools

Primary Schools: Aylesford Primary 0.5 miles, Ditton C of E Junior School 1.2 miles, St Peter's C of E Primary 1.3 miles. Secondary Schools: Aylesford School 0.5 miles, The Malling School 2.4 miles, Grange Park School 2.6 miles



Transport Information

Train Stations: Aylesford 0.8 miles, Barming 1.3 miles, Snodland 2.4 miles



Address

Firs Close, Aylesford, Kent, ME20



Directions

For directions to this property please contact us.



Wards
Helping you move forwards

Call Larkfield Branch 01732 847877 ■ wardsofkent.co.uk



■ Legal advice should be taken to verify fixtures/fittings, planning, alterations and/or lease details ■ Appliances & services are untested, dimensions are approximate and floor plans are not to scale
■ Through a Homewise Home For Life Plan people aged 60+ can secure this property for up to 59% less, by purchasing a Lifetime Lease.



12935041/20240319/CK/RT