



Price

£700,000

Freehold

4x  2x  2x 

**Rocks Close, East
Malling, Kent, ME19**

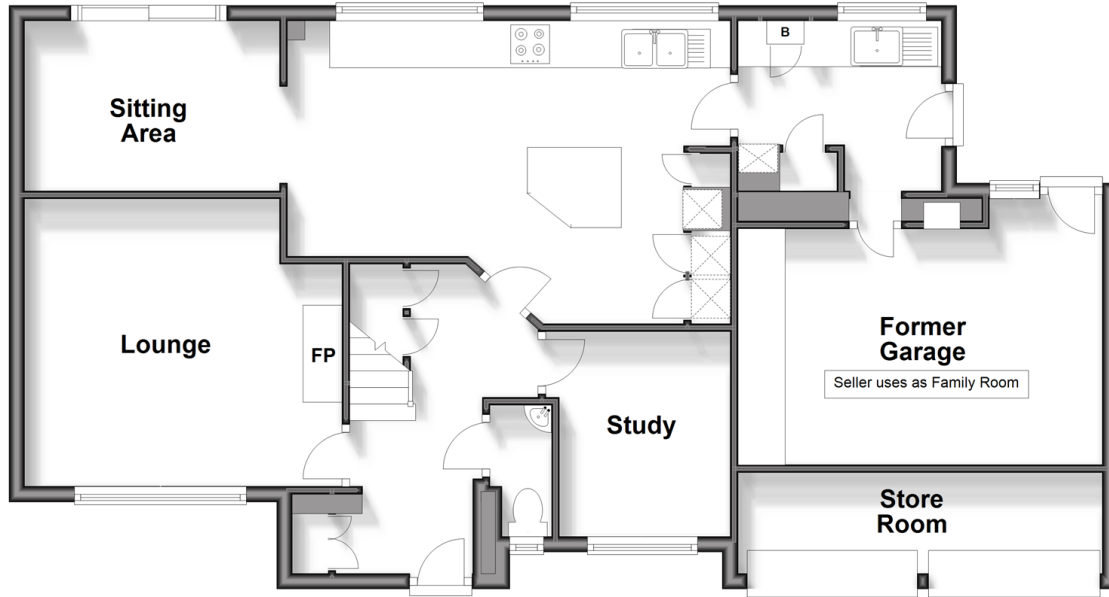
OVER 60?

Secure this property
for up to **59% less!**

Wards
Helping you move forwards

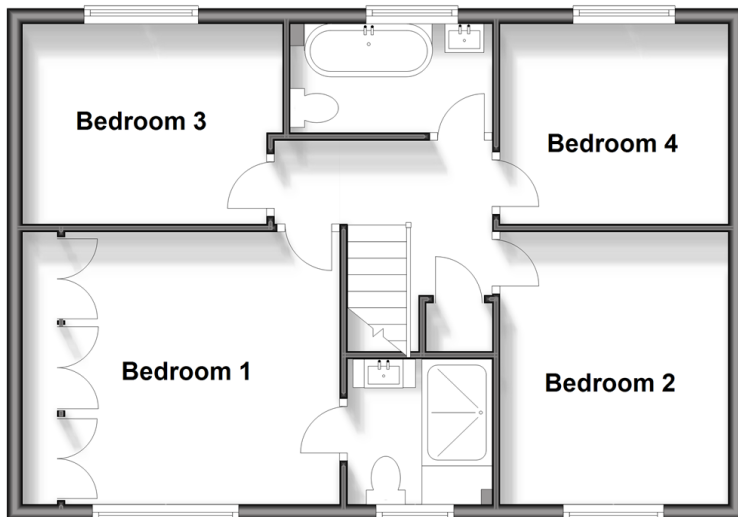
Ground Floor

Approx. 88.6 sq. metres (954.1 sq. feet)



First Floor

Approx. 54.9 sq. metres (591.1 sq. feet)



Accommodation

GROUND FLOOR

Entrance Hall

Cloakroom

Lounge: 13'4 x 12'2 (4.07m x 3.71m)

Study: 8'7 (2.62m) x 7'2 (2.19m) narrowing to 6'8 (2.03m)

Kitchen/Breakfast Room: 18'7 (5.67m) x 12'10 (3.91m) narrowing to 9'9 (2.97m)

Sitting Area: 10'9 x 7'2 (3.28m x 2.19m)

Utility Room: 8'6 x 7'3 (2.59m x 2.21m)

Former Garage: 15'4 x 10'0 (4.68m x 3.05m)

FIRST FLOOR

Landing

Bedroom 1: 11'7 up to fitted wardrobes x 10'10 (3.53m x 3.30m)

En-Suite Shower Room

Bedroom 2: 11'6 x 9'4 (3.51m x 2.85m)

Bedroom 3: 11'0 x 8'6 (3.36m x 2.59m)

Bedroom 4: 9'5 x 7'10 (2.87m x 2.39m)

Bathroom

OUTSIDE

Driveway

Store Room: 16'3 x 5'2 (4.96m x 1.58m)

Front & Rear Gardens



Main features

- Beautifully presented throughout & tucked away in a quiet Close
- Stunning kitchen/breakfast room with sleek integrated appliances & marble work tops
- The garden is like a sun drenched outdoor room - landscaped & a joy to be in
- Work from home with ease in the study
- Double garage currently used as a family room & a store room - a flexible space to use to suit you



Nearest Schools

Primary Schools: St James the Great Primary and Nursery School 0.9 miles, Brookfield Junior School 1.5 miles, Lunsford Primary 1.5 miles. Secondary Schools: The Malling School 0.7 miles, Aylesford School 2.4 miles, Maidstone Grammar School for Girls 3.1 miles



Transport Information

Train Stations: East Malling 0.0 miles, West Malling 1.7 miles, Watlington 2.2 miles



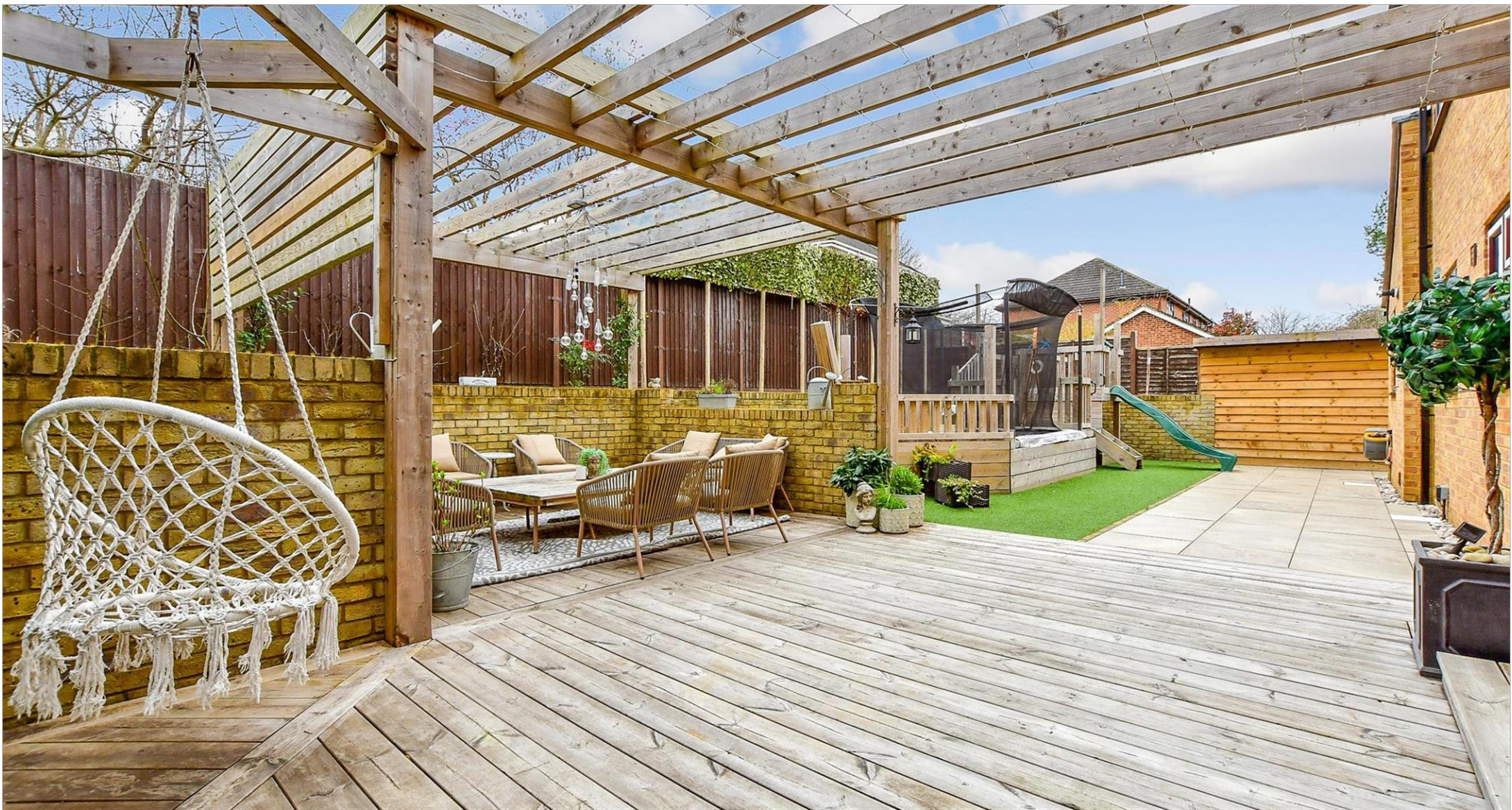
Address

Rocks Close, East Malling, Kent, ME19



Directions

For directions to this property please contact us.



Wards
Helping you move forwards

Call Larkfield Branch 01732 847877 ■ wardsofkent.co.uk



■ Legal advice should be taken to verify fixtures/fittings, planning, alterations and/or lease details ■ Appliances & services are untested, dimensions are approximate and floor plans are not to scale
■ Through a Homewise Home For Life Plan people aged 60+ can secure this property for up to 59% less, by purchasing a Lifetime Lease.



12935088/20240403/CK/RT