



**Price**  
**£550,000**

**Freehold**

4x  2x  1x 

**Thomas Road,  
Aylesford, Kent, ME20**

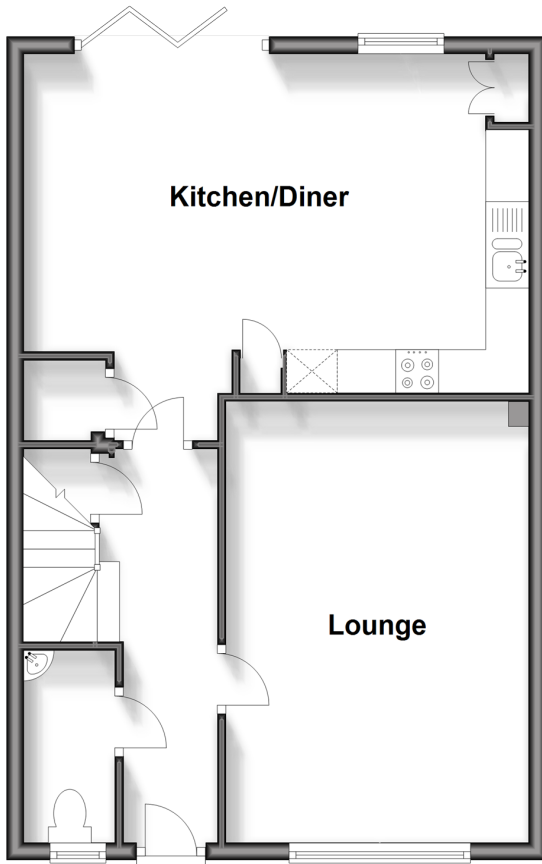
**OVER 60?**

Secure this property  
for up to **59% less!**

*Wards*  
Helping you move forwards

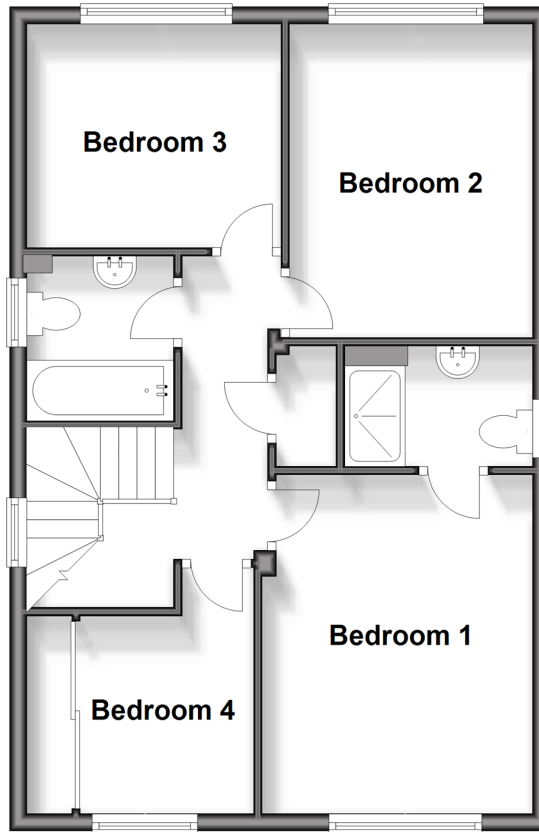
## Ground Floor

Approx. 53.1 sq. metres (571.4 sq. feet)



## First Floor

Approx. 53.7 sq. metres (578.2 sq. feet)



## Accommodation

### GROUND FLOOR

Entrance Hall

Cloakroom

Lounge: 16'6 x 11'2 (5.03m x 3.41m)

Kitchen/Diner: 19'2 x 12'10 (5.85m x 3.91m)

### FIRST FLOOR

Landing

Bedroom 1: 13'4 x 10'3 (4.07m x 3.13m)

En-Suite Shower Room

Bedroom 2: 11'10 x 9'4 (3.61m x 2.85m)

Bedroom 3: 11'10 x 9'4 (3.61m x 2.85m)

Bedroom 4: 9'3 x 6'10 (2.82m x 2.08m)

Bathroom

### OUTBUILDING

Room 1 - Used As An Office: 15'1 x 9'1 (4.60m x 2.77m)

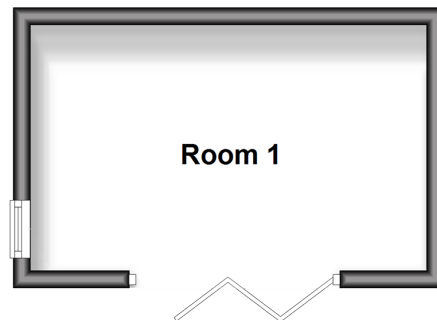
### OUTSIDE

Driveway & Garage

Front & Rear Gardens

## Outbuilding

Approx. 12.9 sq. metres (138.4 sq. feet)





## Main features

- Very well presented throughout
- Work from home with ease in the fantastic outbuilding - a flexible space to use to suit you
- Lovely kitchen/diner - ideal for getting the family together & entertaining
- Stunning views of the historic Preston Hall
- Good commuter links - great train & motorway connections



### Nearest Schools

Primary Schools: Aylesford Primary 0.5 miles, St Peter's C of E Primary 0.6 miles, Allington Primary 0.9 miles.  
Secondary Schools: Aylesford School 0.5 miles, The Maplesden Noakes School 1.7 miles, St Simon Stock Catholic School 1.7 miles



### Transport Information

Train Stations: Aylesford 0.7 miles, Barming 0.7 miles, New Hythe 1.5 miles



### Address

Thomas Road, Aylesford, Kent, ME20



### Directions

For directions to this property please contact us.



**Wards**  
Helping you move forwards

Call Larkfield Branch 01732 847877 ■ [wardsofkent.co.uk](http://wardsofkent.co.uk)



■ Legal advice should be taken to verify fixtures/fittings, planning, alterations and/or lease details ■ Appliances & services are untested, dimensions are approximate and floor plans are not to scale  
■ Through a Homewise Home For Life Plan people aged 60+ can secure this property for up to 59% less, by purchasing a Lifetime Lease.

EPC RATING

CURRENT: **B(83)** POTENTIAL: **A(93)**

12934674/20240321/CK/JT