

OVER 60?

Secure this property
for up to **59% less!**



Price

£575,000

Freehold

4x  1x  1x 

Grange Close, Leybourne, West Malling,
Kent, ME19

Wards

Helping you move forwards



Main features

- Set in a lovely semi-rural location
- Stunning field views to enjoy to the front of the home
- Sociable kitchen/diner - ideal for bringing the family together
- Generous sunny & secluded garden - great for children to play safely
- Easy walk to West Malling with good shops, pubs & restaurants

Accommodation

GROUND FLOOR

Entrance Hall

Kitchen/Diner: 31'0 x 11'6 (9.46m x 3.51m)

Utility Room: 8'0 x 7'10 (2.44m x 2.39m)

Lounge: 24'10 x 13'2 (7.57m x 4.02m)

Conservatory: 16'1 x 8'4 (4.91m x 2.54m)

FIRST FLOOR

Landing

Bedroom 1: 15'9 x 11'5 (4.80m x 3.48m)

Bedroom 2: 11'10 x 11'5 (3.61m x 3.48m)

Bedroom 3: 10'10 x 10'8 (3.30m x 3.25m)

Bedroom 4: 9'6 x 7'3 (2.90m x 2.21m)

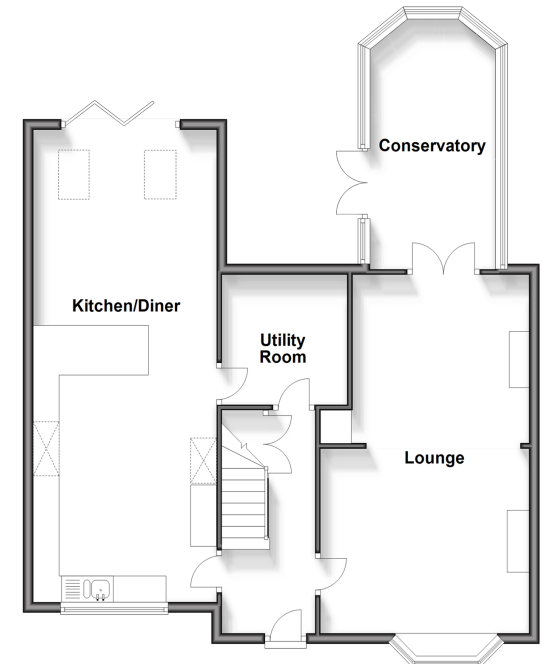
Bathroom

OUTSIDE

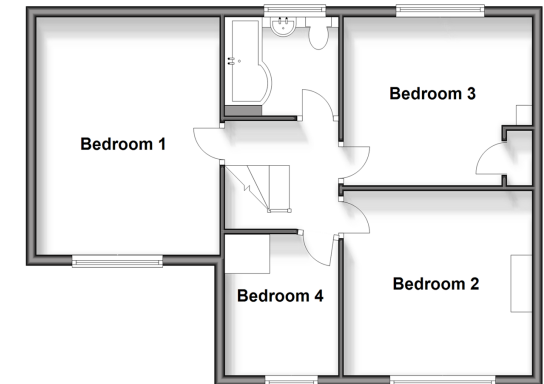
Front & Rear Gardens

Communal Garden

Ground Floor
Approx. 84.5 sq. metres (909.1 sq. feet)



First Floor
Approx. 57.0 sq. metres (613.1 sq. feet)



Call Larkfield - 01732 847877 ■ wardsof Kent.co.uk

- Legal advice should be taken to verify fixtures/fittings, planning, alterations and/or lease details
- Appliances & services are untested, dimensions are approximate and floor plans are not to scale
- Through a Homewise Home For Life Plan people aged 60+ can secure this property for up to 59% less, by purchasing a Lifetime Lease.



12934963/20231220/CK/JT