



OVER 60?

Secure this property
for up to **59% less!**

Price

£500,000

Freehold

4x  1x  1x 

**Woodlands Road,
Aylesford, Kent, ME20**

Wards
Helping you move forwards



Main features

- Well presented throughout & set in the sought after Holtwood area
- All bedrooms are good sizes
- Sociable kitchen/dining area - perfect for today's lifestyle
- Generous living spaces makes this a great home for a growing family
- Excellent schools & commuter links by road & rail close by

Accommodation

GROUND FLOOR

Entrance Hall

Lounge: 11'8 x 11'6 (3.56m x 3.51m)

Dining Area: 11'7 x 11'7 (3.53m x 3.53m)

Conservatory Area: 22'11 x 13'0 (6.99m x 3.97m)

Kitchen: 13'2 x 8'3 (4.02m x 2.52m)

FIRST FLOOR

Landing

Bedroom 1: 12'8 x 11'7 (3.86m x 3.53m)

Bedroom 2: 12'9 x 9'4 (3.89m x 2.85m)

Bedroom 3: 11'5 x 9'8 (3.48m x 2.95m)

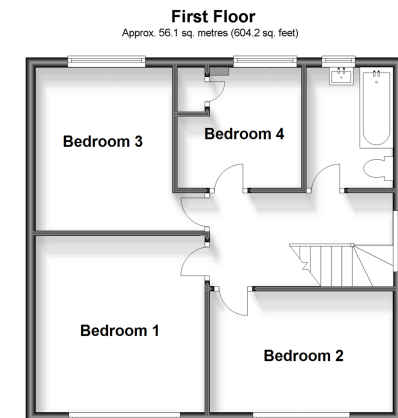
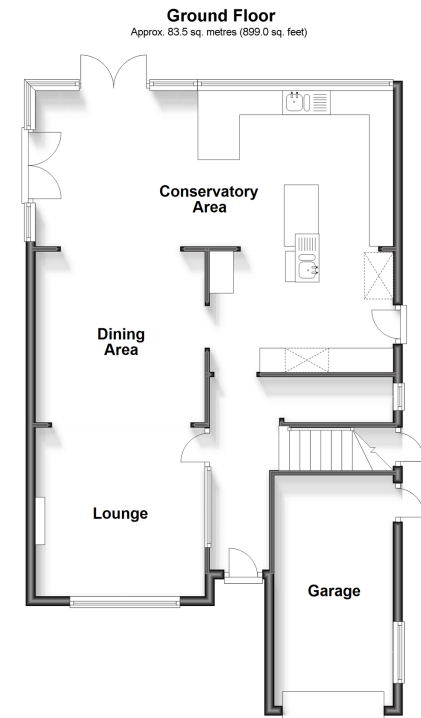
Bedroom 4: 8'6 x 8'1 (2.59m x 2.47m)

Bathroom

OUTSIDE

Driveway & Garage

Rear Garden



Call Larkfield - 01732 847877 ■ wardsof Kent.co.uk

- Legal advice should be taken to verify fixtures/fittings, planning, alterations and/or lease details
- Appliances & services are untested, dimensions are approximate and floor plans are not to scale
- Through a Homewise Home For Life Plan people aged 60+ can secure this property for up to 59% less, by purchasing a Lifetime Lease.



12934942/20231129/JT/JT