



Price
£400,000

Freehold

3x  2x  1x 

**Garner Drive,
Bradbourne Fields, East
Malling, Kent, ME19**

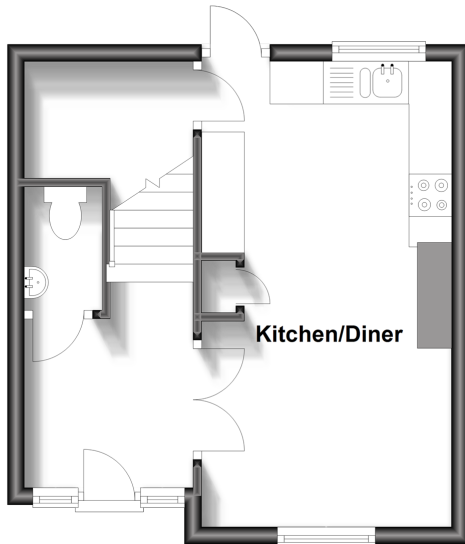
OVER 60?

Secure this property
for up to **59% less!**

Wards
Helping you move forwards

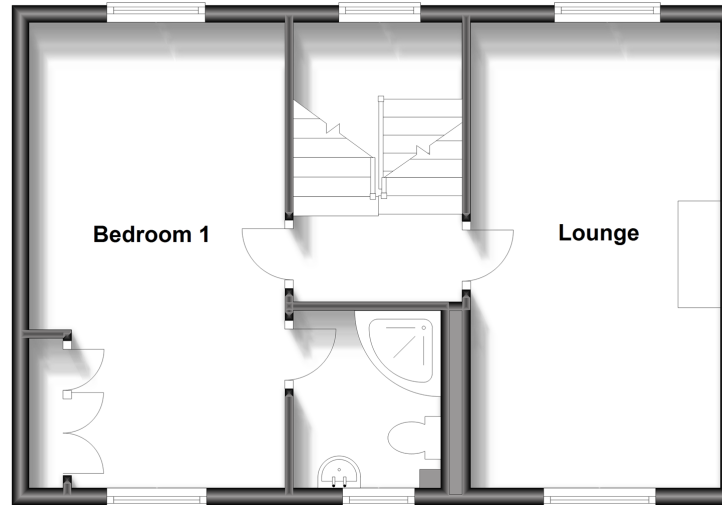
Ground Floor

Approx. 26.4 sq. metres (284.1 sq. feet)



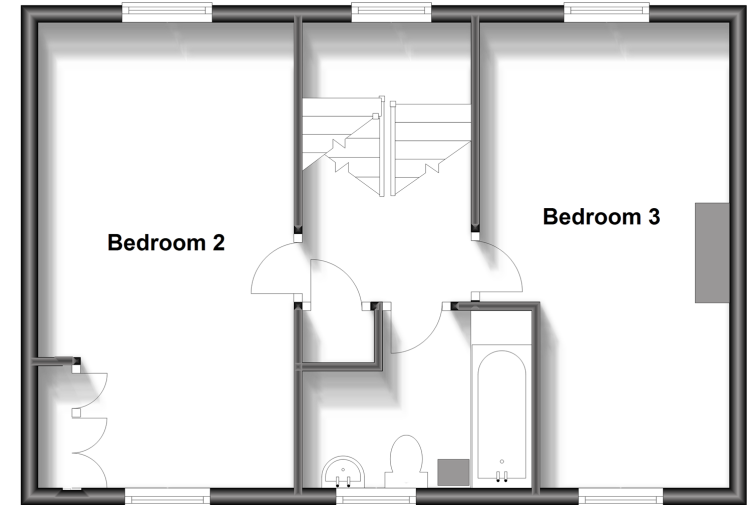
First Floor

Approx. 44.3 sq. metres (476.6 sq. feet)



Second Floor

Approx. 44.4 sq. metres (478.4 sq. feet)



Accommodation

GROUND FLOOR

Entrance Hall
Cloakroom
Kitchen/Diner: 17'6 x 9'6 (5.34m x 2.90m)

FIRST FLOOR

Landing
Lounge: 17'10 x 9'7 (5.44m x 2.92m)
Bedroom 1: 17'10 x 9'9 (5.44m x 2.97m)
En-Suite Shower Room

SECOND FLOOR

Landing
Bedroom 2: 17'10 x 9'9 (5.44m x 2.97m)
Bedroom 3: 17'10 (5.44m) x 9'6 (2.90m)
narrowing to 7'2 (2.19m)
Bathroom

OUTSIDE

Front & Rear Gardens
Driveway & Garage



Main features

- No chain worries - no forward chain
- All the bedrooms are doubles - no box rooms to worry about
- Enjoy the luxury of an en-suite shower room & a bathroom - ideal for a large family
- Spacious home set in a quiet & exclusive setting with lovely green views to the front
- Excellent schools, shops & commuter links within easy reach



Nearest Schools

Primary Schools: Ditton C of E Junior School 0.4 miles, Brookfield Junior School 0.4 miles, Lunsford Primary 0.4 miles. Secondary Schools: The Malling School 0.5 miles, Aylesford School 0.9 miles, Grange Park School 1.4 miles



Transport Information

Train Stations: East Malling 1.2 miles, West Malling 1.6 miles, New Hythe 1.7 miles



Address

Garner Drive, Bradbourne Fields, East Malling, Kent, ME19



Directions

For directions to this property please contact us.



Wards
Helping you move forwards

Call Larkfield Branch 01732 847877 ■ wardsofkent.co.uk



■ Legal advice should be taken to verify fixtures/fittings, planning, alterations and/or lease details ■ Appliances & services are untested, dimensions are approximate and floor plans are not to scale
■ Through a Homewise Home For Life Plan people aged 60+ can secure this property for up to 59% less, by purchasing a Lifetime Lease.



12930071/20230606/JT/JT