



Price
£435,000

**Share of
Freehold**

3x  2x  1x 

**Broadviews, South
Road, Hythe, Kent, CT21**

OVER 60?

Secure this property
for up to **59% less!**

Wards
Helping you move forwards



Main features

- Large lounge/diner with private balcony and panoramic sea views
- 1st floor flat, service charge agreed with freeholders
- Double tandem garage
- Large kitchen, bedroom 1 with en-suite shower room
- Staircase from communal gardens with direct access to beach

Accommodation

FIRST FLOOR

Entrance Hall

Lounge/Diner: 28'5 x 13'1 (8.67m x 3.99m)

Balcony: 14'1 x 3'4 (4.30m x 1.02m)

Kitchen: 12'7 x 10'0 (3.84m x 3.05m)

Bedroom 1: 13'8 x 12'1 (4.17m x 3.69m)

En-Suite Shower Room: 8'3 x 7'0 (2.52m x 2.14m)

Bedroom 2: 13'8 x 8'4 (4.17m x 2.54m)

Bedroom 3: 10'2 x 7'5 (3.10m x 2.26m)

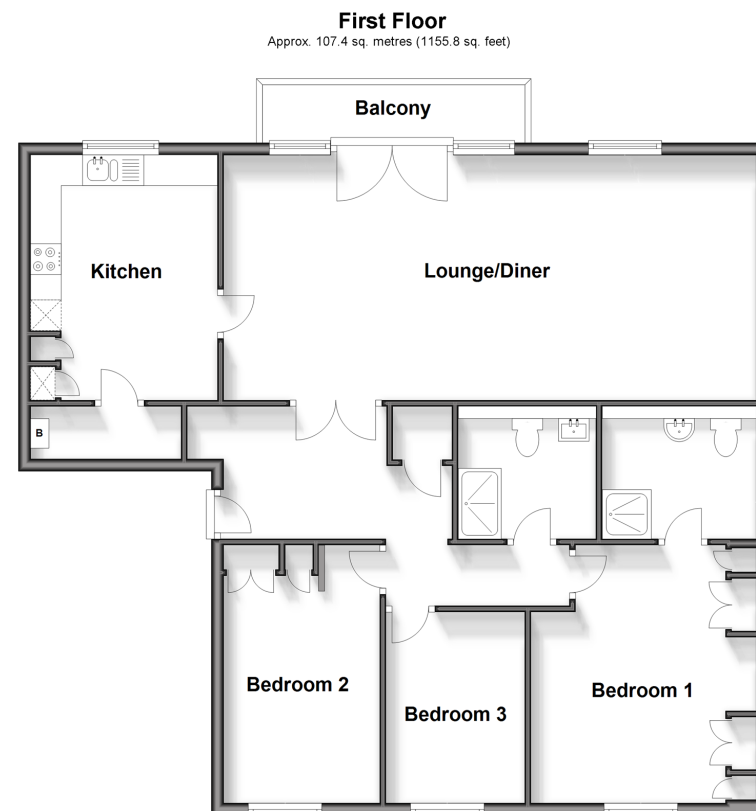
Shower Room: 7'4 x 6'10 (2.24m x 2.08m)

OUTSIDE

Double Garage: 30'7 x 9'2 (9.33m x 2.80m)

Store: 5'9 x 3'5 (1.75m x 1.04m)

Communal Gardens



Call Hythe - 01303 267473 ■ wardsofKent.co.uk

- Legal advice should be taken to verify fixtures/fittings, planning, alterations and/or lease details
- Appliances & services are untested, dimensions are approximate and floor plans are not to scale
- Through a Homewise Home For Life Plan people aged 60+ can secure this property for up to 50% less, by purchasing a Lifetime Lease.



12824844/20251126/MIB/MIB