



Guide Price
£325,000

Freehold

2x  2x  1x 

**The Hyde, Dental Street,
Hythe, Kent, CT21**

OVER 60?

Secure this property
for up to **59% less!**

Wards
Helping you move forwards



Main features

- Immaculate eco home with ground source heat pump
- Both bedrooms have an en-suite
- Stunning open plan lounge/diner opening out onto private balcony with lovely rooftop views
- No onward chain
- Allocated parking, communal gardens

Accommodation

GROUND FLOOR

Entrance Hall

Bedroom 1: 13'7 x 8'8 (4.14m x 2.64m)

En-Suite Shower Room: 7'9 x 6'1 (2.36m x 1.86m)

Bedroom 2: 13'6 x 8'9 (4.12m x 2.67m)

En-Suite Shower Room: 11'1 x 2'9 (3.38m x 0.84m)

FIRST FLOOR

Landing

Cloakroom

Lounge/Diner: 16'6 x 12'2 (5.03m x 3.71m)

Balcony: 22'1 x 4'1 (6.74m x 1.25m)

Kitchen: 13'4 x 9'2 (4.07m x 2.80m)

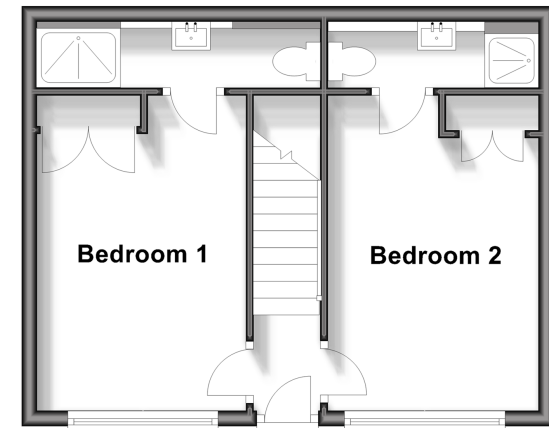
OUTSIDE

Allocated Parking

Communal Garden

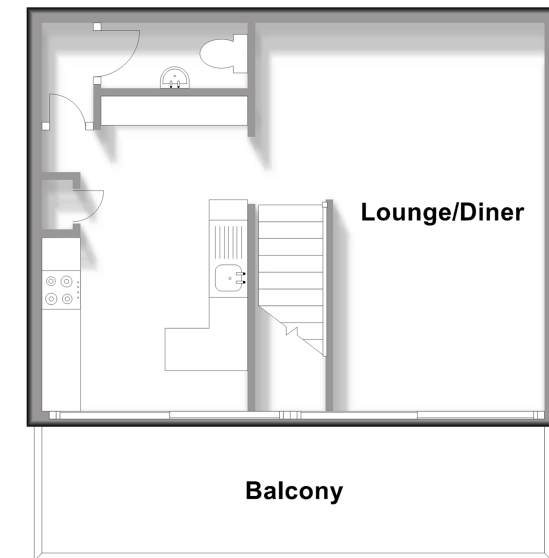
Ground Floor

Approx. 32.9 sq. metres (353.9 sq. feet)



First Floor

Approx. 32.9 sq. metres (353.6 sq. feet)



Call Hythe - 01303 267473 ■ wardsof Kent.co.uk

- Legal advice should be taken to verify fixtures/fittings, planning, alterations and/or lease details
- Appliances & services are untested, dimensions are approximate and floor plans are not to scale
- Through a Homewise Home For Life Plan people aged 60+ can secure this property for up to 59% less, by purchasing a Lifetime Lease.



12823814/20250228/OH/MIB