



Guide Price
£500,000

Freehold

3x  2x  2x 

**Tanners Hill Gardens,
Hythe, Kent, CT21**

OVER 60?

Secure this property
for up to **59% less!**

Wards
Helping you move forwards



Main features

- Lovely home backing onto Eaton land
- Large open plan lounge and kitchen/diner area flooded with light from the skylights
- Separate snug to relax in
- Downstairs shower room
- Modern upstairs bathroom

Accommodation

GROUND FLOOR

Entrance hall

Snug: 13'3 x 13'1 (4.04m x 3.99m)

Lounge: 13'5 (4.09m) x 8'11 (2.72m) narrowing to 7'10 (2.39m)

Kitchen/Diner: 27'1 (8.26m) x 12'6 (3.81m) narrowing to 9'7 (2.92m)

Utility Area: 13'0 x 4'9 (3.97m x 1.45m)

Shower Room: 7'11 x 5'10 (2.41m x 1.78m)

FIRST FLOOR

Landing

Bedroom 1: 12'10 x 8'9 (3.91m x 2.67m)

Bedroom 2: 12'2 (3.71m) narrowing to 11'0 (3.36m) x 11'0 (3.36m)

Bedroom 3: 12'0 x 7'0 (3.66m x 2.14m)

Bathroom: 6'0 x 5'11 (1.83m x 1.80m)

OUTSIDE

Off Road Parking

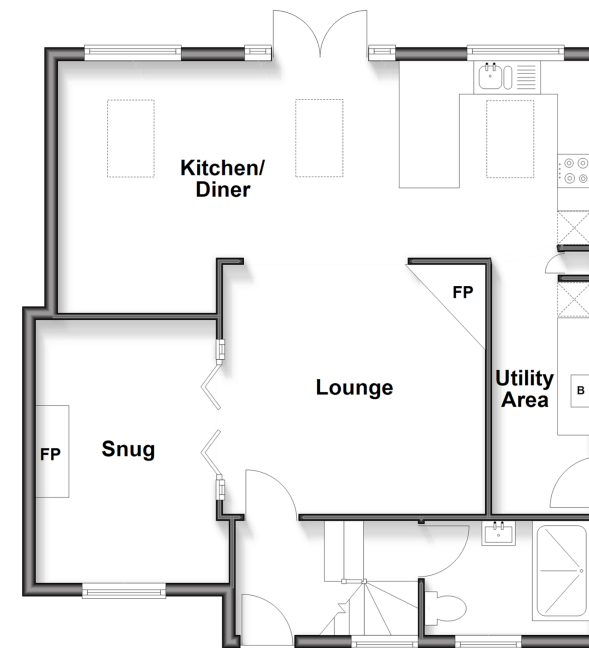
Front & Rear Gardens

Log Cabin: 11'4 x 8'11 (3.46m x 2.72m)

Storage Shed: 9'2 x 7'4 (2.80m x 2.24m)

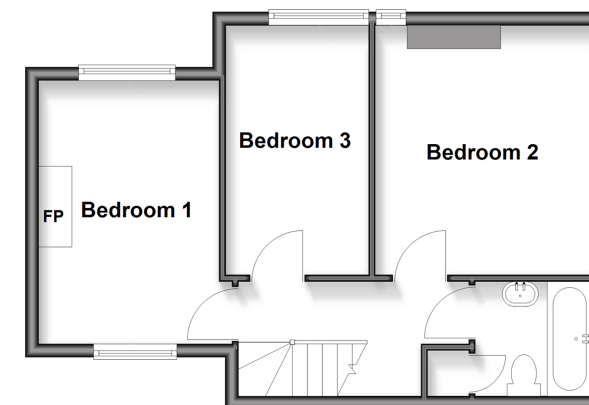
Ground Floor

Approx. 67.7 sq. metres (729.1 sq. feet)



First Floor

Approx. 41.4 sq. metres (445.3 sq. feet)



Call Hythe - 01303 267473 ■ wardsofkent.co.uk

- Legal advice should be taken to verify fixtures/fittings, planning, alterations and/or lease details
- Appliances & services are untested, dimensions are approximate and floor plans are not to scale
- Through a Homewise Home For Life Plan people aged 60+ can secure this property for up to 50% less, by purchasing a Lifetime Lease.



12825217/20251119/MEL/MIB