



OVER 60?

Secure this property
for up to **59% less!**

Price

£400,000

Freehold

3x  1x  1x 

**Newmans Close, Hythe,
Kent, CT21**

Wards
Helping you move forwards



Main features

- Chain free
- Central location with a short walk to the beach and canal
- Large open plan lounge/diner and kitchen
- Bedroom 3/study on the ground floor
- Low maintenance courtyard garden

Accommodation

GROUND FLOOR

Porch
Entrance Hall
Bedroom 3/Study: 10'5 x 9'4 (3.18m x 2.85m)
Utility Room
Cloakroom

FIRST FLOOR

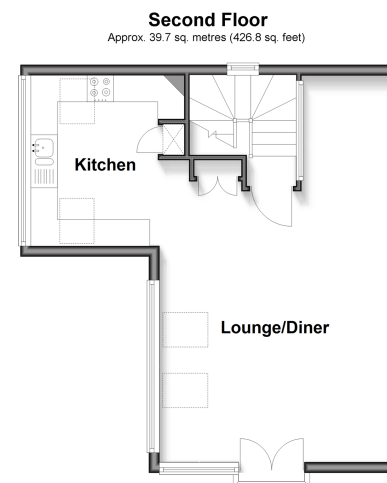
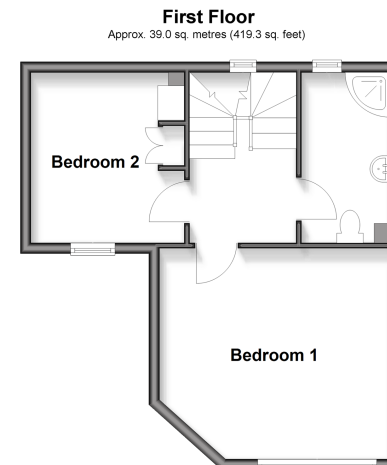
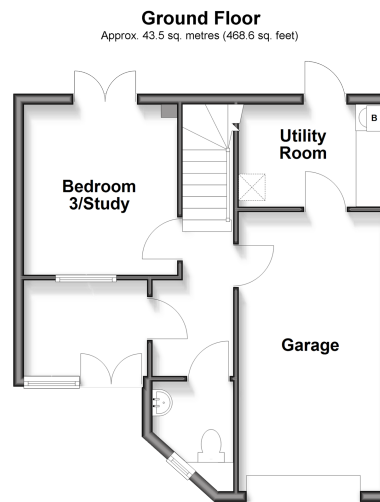
Landing
Bedroom 1: 14'3 x 13'2 (4.35m x 4.02m)
Bedroom 2: 10'6 x 9'6 (3.20m x 2.90m)
Shower Room

SECOND FLOOR

Landing
Kitchen : 10'7 x 9'6 (3.23m x 2.90m)
Lounge/Diner: 24'0 maximum x 14'4 (7.32m x 4.37m)
Juliett Balcony

OUTSIDE

Garage
2 Allocated Parking Spaces
Courtyard Rear Garden



Call Hythe - 01303 267473 ■ wardsofKent.co.uk

- Legal advice should be taken to verify fixtures/fittings, planning, alterations and/or lease details
- Appliances & services are untested, dimensions are approximate and floor plans are not to scale
- Through a Homewise Home For Life Plan people aged 60+ can secure this property for up to 50% less, by purchasing a Lifetime Lease.



12818989/20250913/MEL/MIB