



**OVER 60?**

Secure this property  
for up to **59% less!**

**Price**

**£250,000**

**Freehold**

3x  1x  1x 

**Greenfields, Sellindge,  
Ashford, Kent, TN25**

*Wards*  
Helping you move forwards





## Main features

- In need of some cosmetic updating
- Large kitchen/diner
- Oil fired central heating
- No onward chain
- Close to local shop and primary school
- Easy access to Hythe & Canterbury

## Accommodation

### GROUND FLOOR

Entrance Hall

Lounge: 17'7 x 10'7 (5.36m x 3.23m)

Kitchen/Diner: 15'4 x 8'1 (4.68m x 2.47m)

Cloakroom

### FIRST FLOOR

Landing

Bedroom 1: 14'0 (4.27m) x 11'7 (3.53m)  
narrowing to 8'7 (2.62m)

Bedroom 2: 12'4 x 8'8 (3.76m x 2.64m)

Bedroom 3: 8'10 x 8'10 (2.69m x 2.69m)

Bathroom: 6'9 x 5'5 (2.06m x 1.65m)

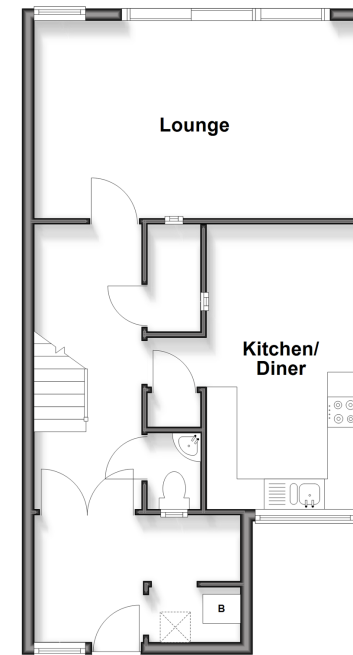
### OUTSIDE

Garage: 15'8 x 8'0 (4.78m x 2.44m)

Front & Rear Gardens

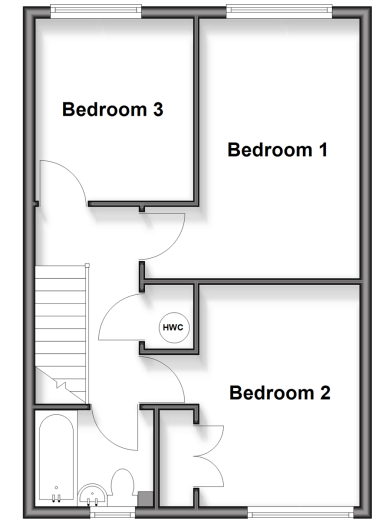
### Ground Floor

Approx. 50.6 sq. metres (544.4 sq. feet)



### First Floor

Approx. 43.1 sq. metres (463.9 sq. feet)



**Call Hythe - 01303 267473 ■ [wardsofkent.co.uk](http://wardsofkent.co.uk)**

- Legal advice should be taken to verify fixtures/fittings, planning, alterations and/or lease details
- Appliances & services are untested, dimensions are approximate and floor plans are not to scale
- Through a Homewise Home For Life Plan people aged 60+ can secure this property for up to 50% less, by purchasing a Lifetime Lease.



12825118/20250903/MIB/MIB