



Price

£285,000

Freehold

3x  1x  2x 

**Meadow Grove,
Sellindge, Ashford,
Kent, TN25**

OVER 60?

Secure this property
for up to **59% less!**

Wards
Helping you move forwards



Main features

- Stunning home tucked away in a quiet close
- Walking distance to local village shop and post office
- Recently replaced some storage heaters
- Wood burner for chilly winter evenings
- Sunny aspect secluded garden

Accommodation

GROUND FLOOR

Entrance Hall

Cloakroom

Lounge: 14'6 (4.42m) narrowing to 11'7 (3.53m) x 12'7 (3.84m)

Dining Room: 10'1 x 9'9 (3.08m x 2.97m)

Kitchen: 10'1 x 7'4 (3.08m x 2.24m)

FIRST FLOOR

Landing

Bedroom 1: 11'8 (3.56m) narrowing to 8'4 (2.54m) x 11'1 (3.38m)

Bedroom 2: 8'6 x 7'2 (2.59m x 2.19m)

Bedroom 3: 7'11 x 5'9 (2.41m x 1.75m)

Bathroom: 7'0 x 4'7 (2.14m x 1.40m)

OUTSIDE

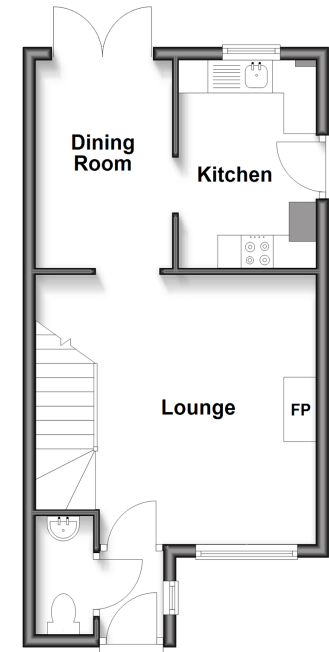
Off Road Parking

Garage: 17'0 x 8'9 (5.19m x 2.67m)

Front & Rear Gardens

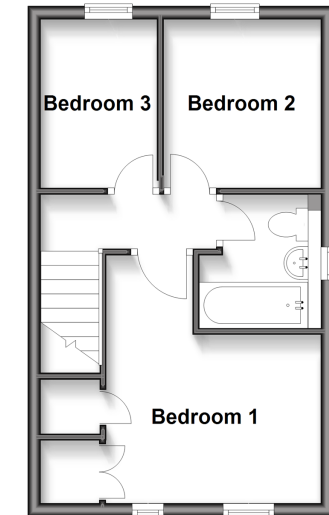
Ground Floor

Approx. 34.1 sq. metres (367.0 sq. feet)



First Floor

Approx. 31.3 sq. metres (336.4 sq. feet)



Call Hythe - 01303 267473 ■ wardsofKent.co.uk

- Legal advice should be taken to verify fixtures/fittings, planning, alterations and/or lease details
- Appliances & services are untested, dimensions are approximate and floor plans are not to scale
- Through a Homewise Home For Life Plan people aged 60+ can secure this property for up to 59% less, by purchasing a Lifetime Lease.



12824578/20250531/TT/MIB