



**Guide Price**  
**£250,000**

**Leasehold**

2x  1x  1x 

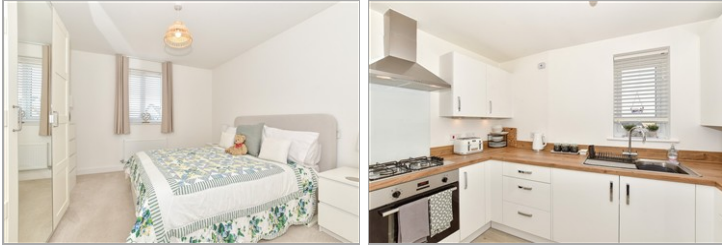
**Dearman Crescent,  
Hythe, Kent, CT21**

**OVER 60?**

Secure this property  
for up to **59% less!**

*Wards*  
Helping you move forwards





## Main features

- Second floor flat with lovely views over Martello Lake
- Built 1 year ago with 10 year NHBC warranty
- 2 double bedrooms
- Immaculately presented and finished to a high standard, allocated parking
- Balcony accessed from lounge and bedroom 1 with lovely views

## Accommodation

### SECOND FLOOR

#### Entrance Hall

Lounge: 14'4 x 12'9 (4.37m x 3.89m)

Kitchen: 10'6 x 6'4 (3.20m x 1.93m)

Bathroom: 7'0 x 6'7 (2.14m x 2.01m)

Bedroom 1: 13'3 (4.04m) narrowing to 11'5 (3.48m) x 11'5 (3.48m)

Balcony: 10'11 x 4'3 (3.33m x 1.30m)

Bedroom 2: 13'4 x 11'2 (4.07m x 3.41m)

### OUTSIDE

Allocated Parking

### Second Floor

Approx. 63.8 sq. metres (686.3 sq. feet)



**Call Hythe - 01303 267473 ■ [wardsofkent.co.uk](http://wardsofkent.co.uk)**

- Legal advice should be taken to verify fixtures/fittings, planning, alterations and/or lease details
- Appliances & services are untested, dimensions are approximate and floor plans are not to scale
- Through a Homewise Home For Life Plan people aged 60+ can secure this property for up to 50% less, by purchasing a Lifetime Lease.



12825033/20251023/OH/MIB