



OVER 60?

Secure this property
for up to **59% less!**

Price

£400,000

Freehold

3x  1x  2x 

**Stone Street, Lympne,
Hythe, Kent, CT21**

Wards
Helping you move forwards



Main features

- **Extended home with a large secluded garden**
- **No onward chain**
- **Large lounge, dining area and breakfast area, generous kitchen**
- **Spacious conservatory with lovely views of the garden**
- **Useful utility room and downstairs cloakroom**

Accommodation

GROUND FLOOR

Entrance Hall
Cloakroom
Lounge: 12'7 x 11'0 (3.84m x 3.36m)
Dining Area: 10'10 x 10'0 (3.30m x 3.05m)
Breakfast Area: 9'1 x 8'9 (2.77m x 2.67m)
Conservatory: 16'2 x 10'6 (4.93m x 3.20m)
Kitchen: 15'11 (4.85m) x 15'9 (4.80m) narrowing to 8'7 (2.62m)
Utility Room: 8'6 x 5'1 (2.59m x 1.55m)

FIRST FLOOR

Landing
Bedroom 1: 13'1 into bay x 11'7 (3.99m x 3.53m)
Bedroom 2: 10'11 x 10'0 (3.33m x 3.05m)
Bedroom 3: 7'10 x 6'5 (2.39m x 1.96m)
Bathroom : 6'4 x 5'7 (1.93m x 1.70m)

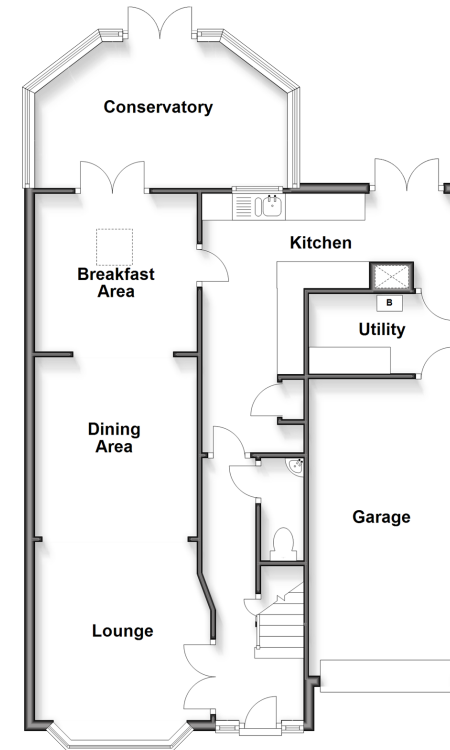
OUTBUILDING

Workshop: 24'0 x 14'0 (7.32m x 4.27m)

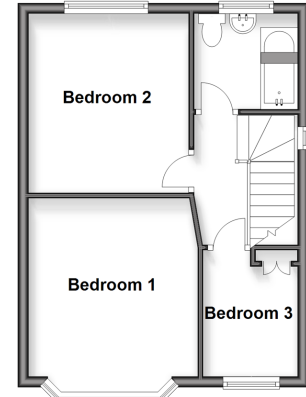
OUTSIDE

Off Road Parking
Garage
Front & Rear Gardens
Two Greenhouses

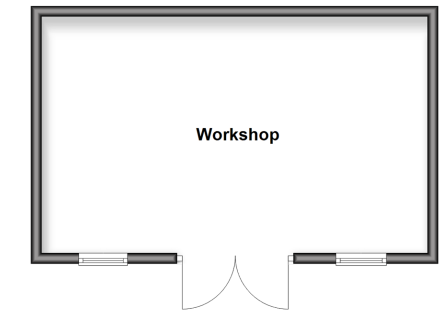
Ground Floor
Approx. 89.4 sq. metres (961.8 sq. feet)



First Floor
Approx. 34.8 sq. metres (374.2 sq. feet)



Outbuilding
Approx. 32.2 sq. metres (346.6 sq. feet)



Call Hythe - 01303 267473 ■ wardsofkent.co.uk

- Legal advice should be taken to verify fixtures/fittings, planning, alterations and/or lease details
- Appliances & services are untested, dimensions are approximate and floor plans are not to scale
- Through a Homewise Home For Life Plan people aged 60+ can secure this property for up to 59% less, by purchasing a Lifetime Lease.



12825005/20250510/MEL/MIB