



OVER 60?

Secure this property
for up to **59% less!**

Price
£275,000

Leasehold

2x  1x  1x 

**Hume Court, South
Road, Hythe, Kent, CT21**

Wards
Helping you move forwards



Main features

- Ground floor apartment with a large garage and a long lease
- Re-fitted kitchen and shower room
- Separate lounge and dining area
- Few minutes walk to the beach and Hythe Imperial golf course
- Short drive to Hythe town centre

Accommodation

GROUND FLOOR

Entrance Hall

Lounge: 16'1 x 11'9 (4.91m x 3.58m)

Dining Area: 9'10 x 5'8 (3.00m x 1.73m)

Kitchen: 11'9 x 7'5 (3.58m x 2.26m)

Bedroom 1: 12'1 x 9'5 (3.69m x 2.87m)

Bedroom 2: 10'10 x 9'5 (3.30m x 2.87m)

Shower Room: 7'1 x 4'10 (2.16m x 1.47m)

Cloakroom

OUTSIDE

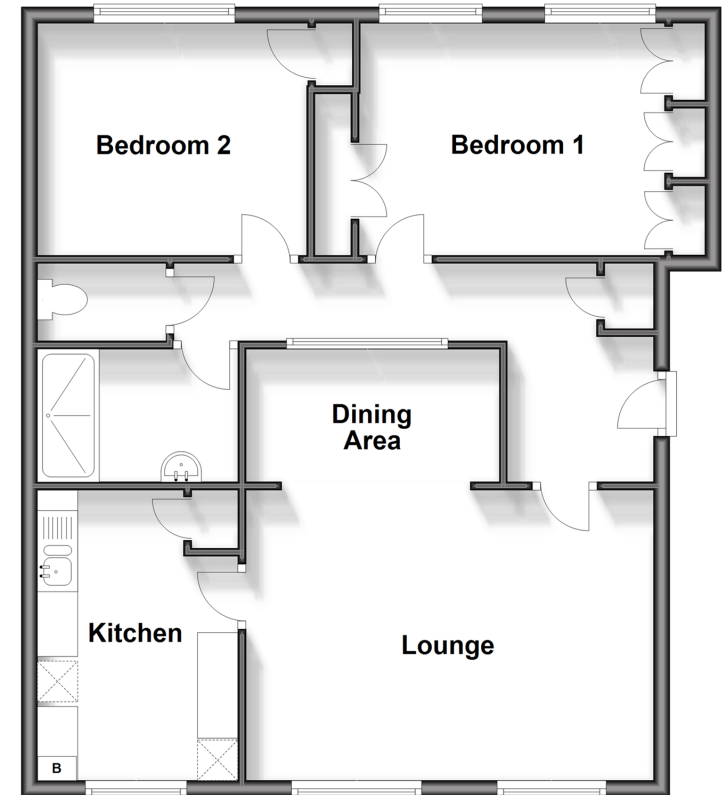
Communal Garden

Garage En-Bloc: 18'2 x 9'0 (5.54m x 2.75m)

Workshop: 9'0 x 7'10 (2.75m x 2.39m)

Ground Floor

Approx. 73.1 sq. metres (787.2 sq. feet)



Call Hythe - 01303 267473 ■ wardsof Kent.co.uk

- Legal advice should be taken to verify fixtures/fittings, planning, alterations and/or lease details
- Appliances & services are untested, dimensions are approximate and floor plans are not to scale
- Through a Homewise Home For Life Plan people aged 60+ can secure this property for up to 59% less, by purchasing a Lifetime Lease.



12824804/20250507/MIB/MIB