



Price
£250,000

Freehold

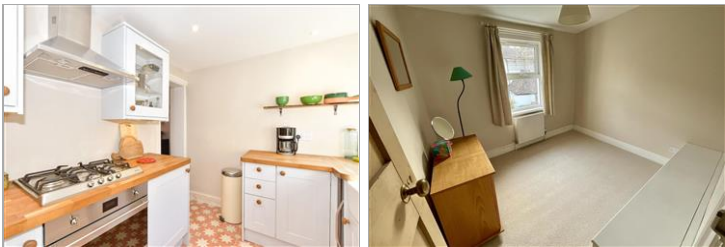
2x  1x  1x 

**Chapel Street, Hythe,
Kent, CT21**

OVER 60?

Secure this property
for up to **59% less!**

Wards
Helping you move forwards



Main features

- **Cosy cottage in central Hythe**
- **Good size lounge with space for a table and chairs**
- **Secluded sunny aspect, low maintenance courtyard garden**
- **Recently replaced boiler**
- **Modern shower room**
- **Few minutes walk to the High Street and the Royal military canal**

Accommodation

GROUND FLOOR

Lounge: 18'9 (5.72m) x 12'2 (3.71m) narrowing to 10'8 (3.25m)

Kitchen: 9'2 x 7'11 (2.80m x 2.41m)

FIRST FLOOR

Landing

Bedroom 1: 13'2 (4.02m) narrowing to 12'5 (3.79m) x 10'9 (3.28m)

Bedroom 2: 9'1 (2.77m) x 8'0 (2.44m) narrowing to 6'10 (2.08m)

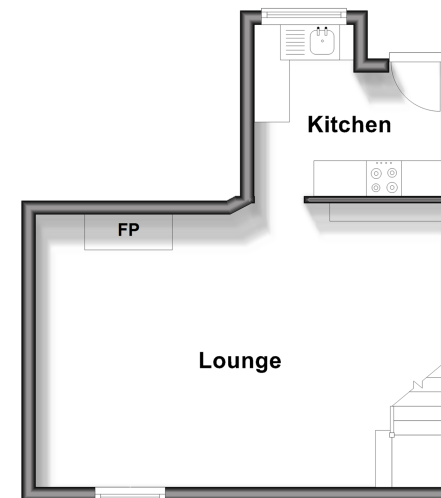
Shower Room: 8'11 x 5'1 (2.72m x 1.55m)

OUTSIDE

Rear Courtyard Garden

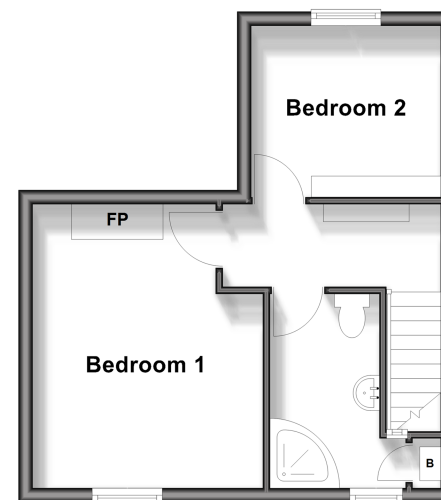
Ground Floor

Approx. 29.0 sq. metres (311.8 sq. feet)



First Floor

Approx. 30.2 sq. metres (325.5 sq. feet)



Call Hythe - 01303 267473 ■ wardsofkent.co.uk

- Legal advice should be taken to verify fixtures/fittings, planning, alterations and/or lease details
- Appliances & services are untested, dimensions are approximate and floor plans are not to scale
- Through a Homewise Home For Life Plan people aged 60+ can secure this property for up to 59% less, by purchasing a Lifetime Lease.



12825018/20250530/OH/MIB