



Price
£340,000

Freehold

2x  1x  1x 

**Woodland Way,
Dymchurch, Romney
Marsh, Kent, TN29**

OVER 60?

Secure this property
for up to **59% less!**

Wards
Helping you move forwards



Main features

- Stunning home with solar panels with battery back up
- EV charging point
- Large conservatory to enjoy the garden from
- Double glazing and gas central heating
- No onward chain

Accommodation

GROUND FLOOR

Entrance Hall

Lounge: 18'2 x 11'7 (5.54m x 3.53m)

Kitchen: 10'6 x 7'3 (3.20m x 2.21m)

Bedroom 1: 12'7 x 10'0 (3.84m x 3.05m)

Bedroom 2: 10'0 x 8'10 (3.05m x 2.69m)

Shower Room: 6'0 x 5'4 (1.83m x 1.63m)

Conservatory: 17'7 x 9'6 (5.36m x 2.90m)

OUTBUILDING

Garage: 16'4 x 8'8 (4.98m x 2.64m)

OUTSIDE

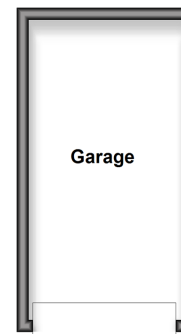
Off Road Parking

Front & Rear Gardens

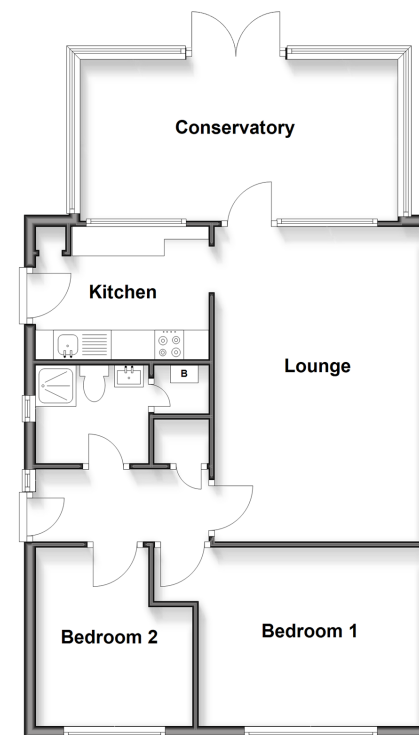
Call Hythe - 01303 267473 ■ wardsof Kent.co.uk

- Legal advice should be taken to verify fixtures/fittings, planning, alterations and/or lease details
- Appliances & services are untested, dimensions are approximate and floor plans are not to scale
- Through a Homewise Home For Life Plan people aged 60+ can secure this property for up to 59% less, by purchasing a Lifetime Lease.

Outbuilding
Approx. 13.6 sq. metres (146.8 sq. feet)



Ground Floor
Approx. 72.3 sq. metres (778.0 sq. feet)



12824989/20250308/MEL/MIB