



Price
£325,000

Freehold

2x  1x  1x 

**Bartholomew Lane,
Hythe, Kent, CT21**

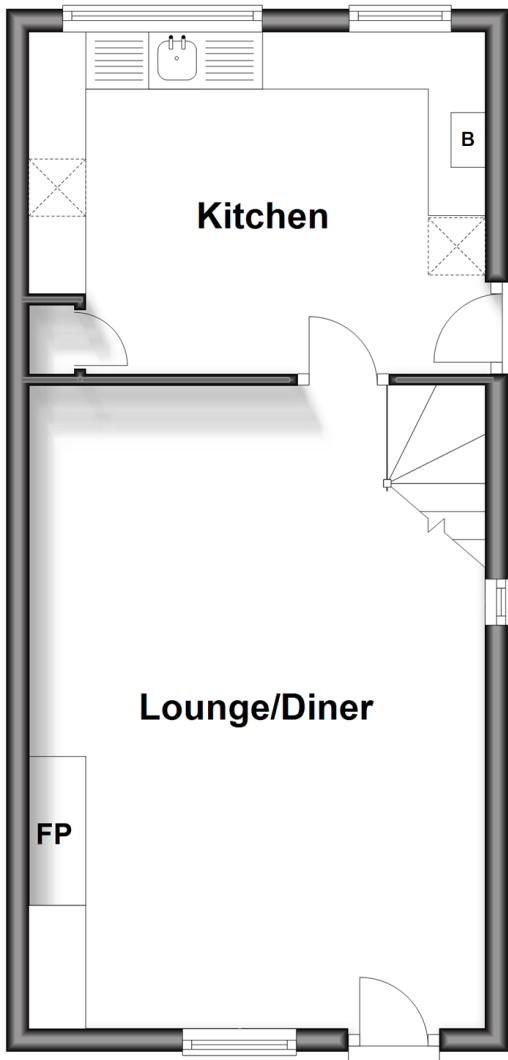
OVER 60?

Secure this property
for up to **59% less!**

Wards
Helping you move forwards

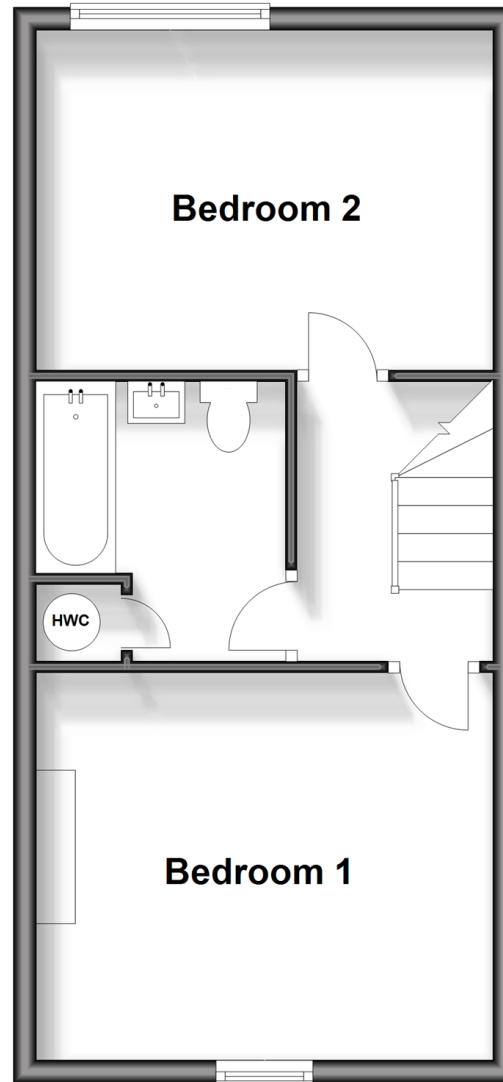
Ground Floor

Approx. 35.0 sq. metres (376.4 sq. feet)



First Floor

Approx. 36.1 sq. metres (389.0 sq. feet)



Accommodation

GROUND FLOOR

Lounge/Diner: 18'9 x 13'1 (5.72m x 3.99m)

Kitchen: 12'9 x 9'9 (3.89m x 2.97m)

FIRST FLOOR

Landing

Bedroom 1: 13'7 x 11'1 (4.14m x 3.38m)

Bedroom 2: 12'9 x 10'0 (3.89m x 3.05m)

Bathroom

OUTSIDE

Front & Rear Gardens



Main features

- Cosy cottage in need of some updating and with no onward chain
- Good size lounge/diner with open fireplace
- Large kitchen with space for table and chairs
- Secluded sunny aspect garden which will be great for a glass of wine at the end of the day
- Walking distance to popular local primary schools and Brockhill secondary school



Nearest Schools

Primary Schools: Saltwood CofE Primary 0.1 miles, Hythe Bay CofE Primary 0.7 miles
Secondary Schools: Brockhill Park Performing Arts College 0.5 miles, The Folekstone School for Girls 4.2 miles, Harvey Grammar School 5.2 miles



Transport Information

Train Stations: Ham Street 9.7 miles, Appledore 11. miles



Address

Bartholomew Lane, Hythe, Kent, CT21



Directions

For directions to this property please contact us.



Wards
Helping you move forwards

Call Hythe Branch 01303 267473 ■ wardsofkent.co.uk



- Legal advice should be taken to verify fixtures/fittings, planning, alterations and/or lease details
- Appliances & services are untested, dimensions are approximate and floor plans are not to scale
- Through a Homewise Home For Life Plan people aged 60+ can secure this property for up to 59% less, by purchasing a Lifetime Lease.



12824927/20250508/MEL/MIB