



Price
£450,000

Freehold

4x  1x  2x 

**Swan Lane, Sellindge,
Ashford, Kent, TN25**

OVER 60?

Secure this property
for up to **59% less!**

Wards
Helping you move forwards



Main features

- Large home without the stress of an onward chain
- Amazing countryside views
- Large lounge and dining room looking out over the back garden
- Generous kitchen and separate breakfast area
- 4 double bedrooms, downstairs cloakroom

Accommodation

GROUND FLOOR

Entrance Hall
 Lounge: 18'10 x 11'11 (5.74m x 3.63m)
 Dining Room: 12'2 x 10'4 (3.71m x 3.15m)
 Cloakroom
 Kitchen: 11'11 x 10'2 (3.63m x 3.10m)
 Breakfast Area: 10'11 x 9'7 (3.33m x 2.92m)

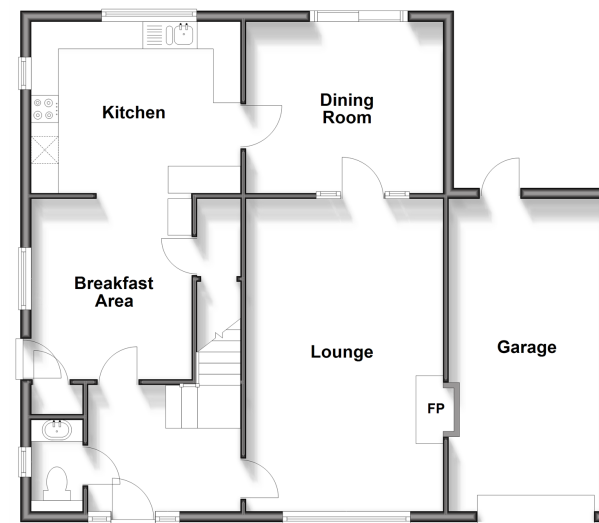
FIRST FLOOR

Landing
 Bedroom 1 With Shower Cubicle: 17'7 x 10'3 (5.36m x 3.13m)
 Bedroom 2: 12'0 x 9'8 (3.66m x 2.95m)
 Bedroom 3: 11'11 x 9'10 (3.63m x 3.00m)
 Bedroom 4: 9'0 x 8'11 (2.75m x 2.72m)
 Bathroom: 6'7 x 6'6 (2.01m x 1.98m)

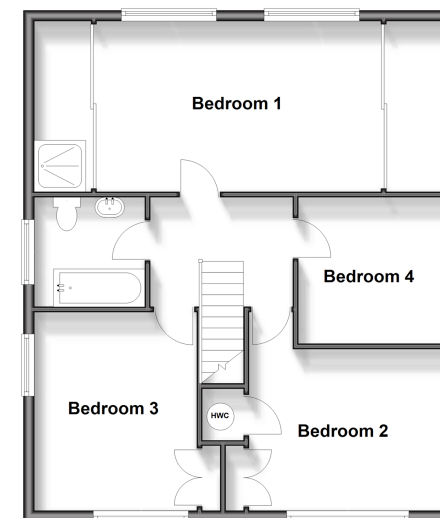
OUTSIDE

Off Road Parking
 Garage
 Front & Rear Gardens

Ground Floor
 Approx. 84.6 sq. metres (910.8 sq. feet)

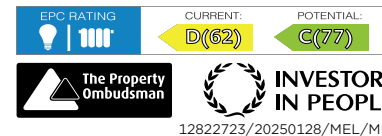


First Floor
 Approx. 68.5 sq. metres (737.1 sq. feet)



Call Hythe - 01303 267473 ■ wardsofkent.co.uk

- Legal advice should be taken to verify fixtures/fittings, planning, alterations and/or lease details
- Appliances & services are untested, dimensions are approximate and floor plans are not to scale
- Through a Homewise Home For Life Plan people aged 60+ can secure this property for up to 59% less, by purchasing a Lifetime Lease.



12822723/20250128/MEL/MIB