



**Price**  
**£315,000**

**Freehold**

2x  1x  1x 

**Hawthorn Close, Hythe,  
Kent, CT21**

**OVER 60?**

Secure this property  
for up to **59% less!**

*Wards*  
Helping you move forwards





## Main features

- 2 double bedrooms overlooking the rear garden
- L shaped lounge/diner with views to the front
- Secluded rear garden
- In need of some modernisation
- Hythe and the beach are a short drive away

## Accommodation

### GROUND FLOOR

Entrance Hall

Lounge/Diner: 19'11 x 17'9 (6.07m x 5.41m)

Kitchen: 10'2 x 8'4 (3.10m x 2.54m)

Conservatory: 6'11 x 5'3 (2.11m x 1.60m)

Bedroom 1: 12'0 x 10'10 (3.66m x 3.30m)

Bedroom 2: 10'11 x 9'5 (3.33m x 2.87m)

Bathroom: 6'1 x 5'5 (1.86m x 1.65m)

### OUTSIDE

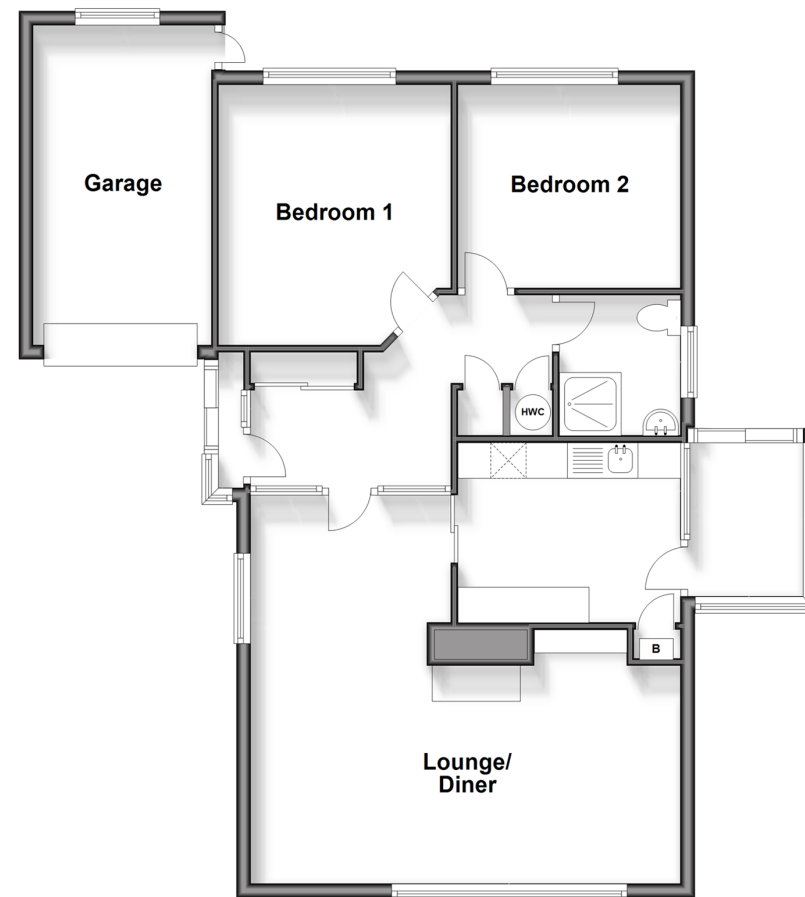
Off Road Parking

Garage

Front & Rear Gardens

### Ground Floor

Approx. 86.9 sq. metres (935.9 sq. feet)



**Call Hythe - 01303 267473 ■ [wardsof Kent.co.uk](http://wardsof Kent.co.uk)**

- Legal advice should be taken to verify fixtures/fittings, planning, alterations and/or lease details
- Appliances & services are untested, dimensions are approximate and floor plans are not to scale
- Through a Homewise Home For Life Plan people aged 60+ can secure this property for up to 59% less, by purchasing a Lifetime Lease.



12824880/20250408/MIB/MIB