



Price
£260,000

Freehold

2x  1x  1x 

**East Street, Hythe, Kent,
CT21**

OVER 60?

Secure this property
for up to **59% less!**

Wards
Helping you move forwards



Main features

- No onward chain
- Good size lounge and kitchen
- Courtyard style garden
- Allocated parking space and additional guest parking
- 2 good size bedrooms
- Few minutes walk to town centre and Royal military canal

Accommodation

GROUND FLOOR

Entrance Hall

Lounge: 16'1 x 12'9 (4.91m x 3.89m)

Kitchen: 11'2 x 6'7 (3.41m x 2.01m)

FIRST FLOOR

Landing

Bedroom 1: 10'8 up to wardrobe x 9'8 (3.25m x 2.95m)

Bedroom 2: 10'7 x 10'1 (3.23m x 3.08m)

Bathroom: 7'0 x 6'5 (2.14m x 1.96m)

OUTSIDE

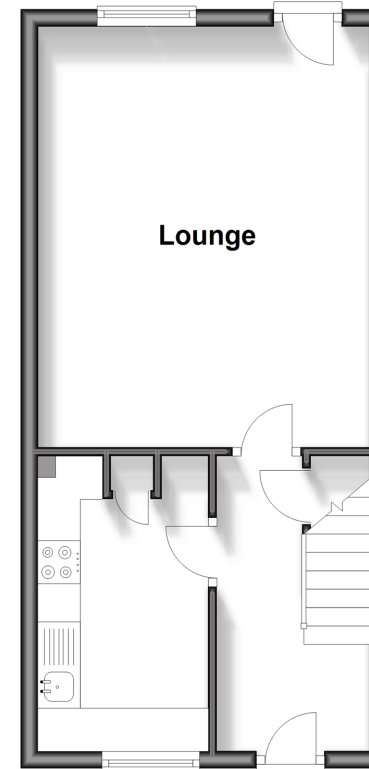
Front & Rear Gardens

Allocated Parking

Visitors Parking

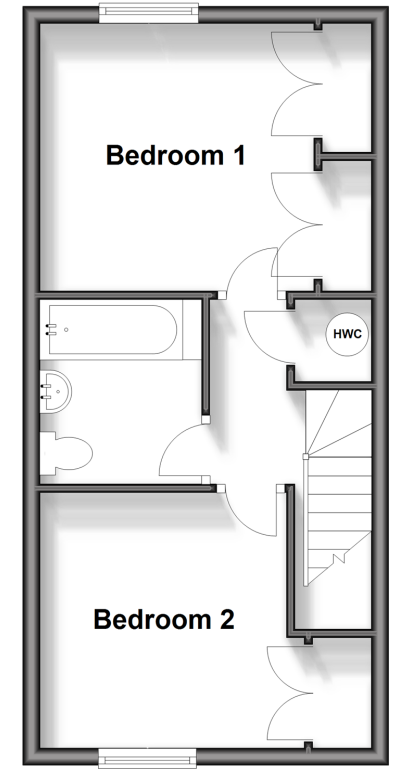
Ground Floor

Approx. 32.8 sq. metres (352.7 sq. feet)



First Floor

Approx. 32.8 sq. metres (352.7 sq. feet)



Call Hythe - 01303 267473 ■ wardsofkent.co.uk

- Legal advice should be taken to verify fixtures/fittings, planning, alterations and/or lease details
- Appliances & services are untested, dimensions are approximate and floor plans are not to scale
- Through a Homewise Home For Life Plan people aged 60+ can secure this property for up to 59% less, by purchasing a Lifetime Lease.



12824871/20250211/OH/MIB