



Price

£350,000

Freehold

3x  2x  1x 

**Beverley Gardens,
Beach Estate,
Dymchurch, Kent, TN29**

OVER 60?

Secure this property
for up to **59% less!**

Wards
Helping you move forwards



Main features

- No onward chain
- Short walk to the bus stop and Dymchurch's beautiful sandy beach
- Re-fitted kitchen, bathroom and en-suite shower room
- Garage providing extra storage
- Garden room/office which will be great if you work from home

Accommodation

GROUND FLOOR

Entrance Hall

Kitchen/Lounge/Diner: 23'4 x 17'3 (7.12m x 5.26m)

Bedroom 1: 22'0 maximum (6.71m) narrowing to 11'2 (3.41m) x 11'8 (3.56m)

En-Suite Shower Room: 10'5 x 4'0 (3.18m x 1.22m)

Bedroom 2: 14'8 x 10'8 (4.47m x 3.25m)

Bedroom 3: 10'1 x 7'4 (3.08m x 2.24m)

Shower Room: 7'2 x 5'5 (2.19m x 1.65m)

OUTSIDE

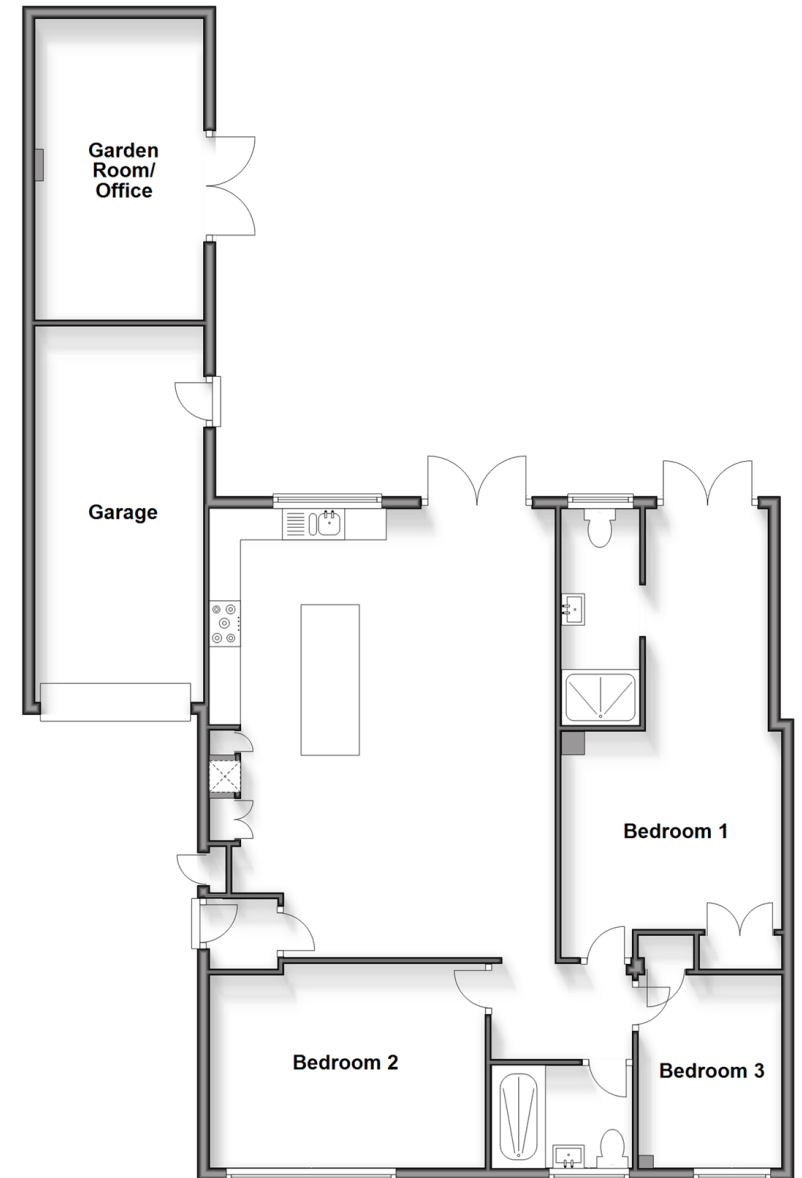
Off Road Parking

Garage: 15'7 x 8'5 (4.75m x 2.57m)

Front & Rear Gardens

Garden Room/Office: 15'7 x 8'5 (4.75m x 2.57m)

Ground Floor
Approx. 125.4 sq. metres (1349.8 sq. feet)



Call Hythe - 01303 267473 ■ wardsof Kent.co.uk

- Legal advice should be taken to verify fixtures/fittings, planning, alterations and/or lease details
- Appliances & services are untested, dimensions are approximate and floor plans are not to scale
- Through a Homewise Home For Life Plan people aged 60+ can secure this property for up to 59% less, by purchasing a Lifetime Lease.



12824708/20240928/MEL/MIB