



Price
£425,000

Freehold

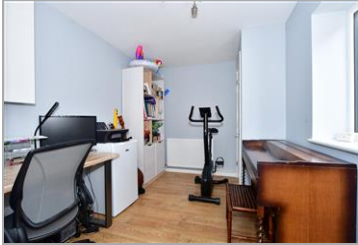
3x  2x  2x 

**Mount Pleasant Close,
Lyminge, Folkestone,
Kent, CT18**

OVER 60?

Secure this property
for up to **59% less!**

Wards
Helping you move forwards



Main features

- Deceptively spacious extended family home
- Fantastic village with a great primary school
- Generous kitchen, separate utility, lounge/diner, study
- Secluded rear garden
- Lovely countryside walks on your doorstep

Accommodation

GROUND FLOOR

- Entrance Hall
- Lounge: 14'2 x 10'9 (4.32m x 3.28m)
- Dining Area: 12'1 x 8'3 (3.69m x 2.52m)
- Study: 10'4 x 7'10 (3.15m x 2.39m)
- Kitchen: 9'9 x 9'7 (2.97m x 2.92m)
- Utility: 5'1 x 4'4 (1.55m x 1.32m)
- Cloakroom

FIRST FLOOR

- Landing
- Bedroom 1: 14'5 (4.40m) narrowing to 8'3 (2.52m) x 9'7 (2.92m)
- En-Suite Shower Room: 9'7 x 5'4 (2.92m x 1.63m)
- Walk-In Wardrobe: 5'1 x 3'8 (1.55m x 1.12m)
- Bedroom 2: 13'6 x 9'5 (4.12m x 2.87m)
- Bedroom 3: 9'9 x 8'1 (2.97m x 2.47m)
- Bathroom: 8'3 x 5'5 (2.52m x 1.65m)

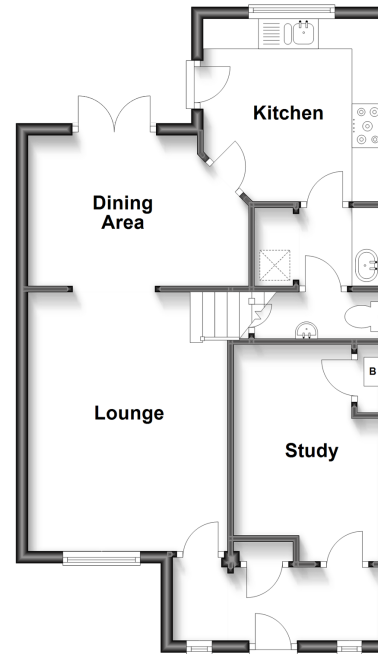
OUTSIDE

- Off Road Parking
- Front & Rear Gardens

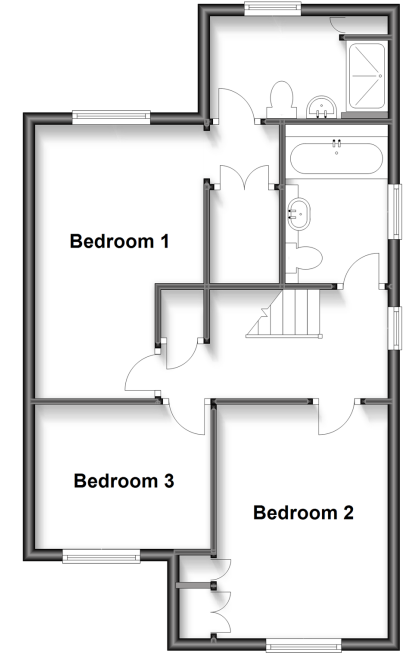
Call Hythe - 01303 267473 ■ wardsof Kent.co.uk

- Legal advice should be taken to verify fixtures/fittings, planning, alterations and/or lease details
- Appliances & services are untested, dimensions are approximate and floor plans are not to scale
- Through a Homewise Home For Life Plan people aged 60+ can secure this property for up to 59% less, by purchasing a Lifetime Lease.

Ground Floor
Approx. 51.8 sq. metres (557.4 sq. feet)



First Floor
Approx. 52.2 sq. metres (561.5 sq. feet)



12815933/20240806/DC/MB