

OVER 60?

Secure this property
for up to **59% less!**



Price

£475,000

Freehold

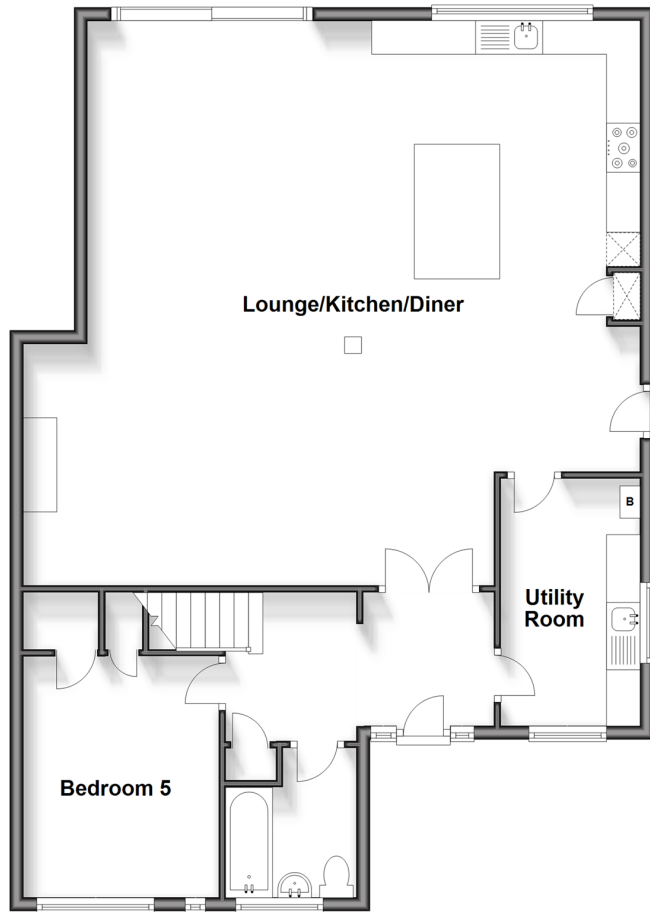
5x  2x  1x 

Oaks View, Hythe, Kent, CT21

Wards
Helping you move forwards

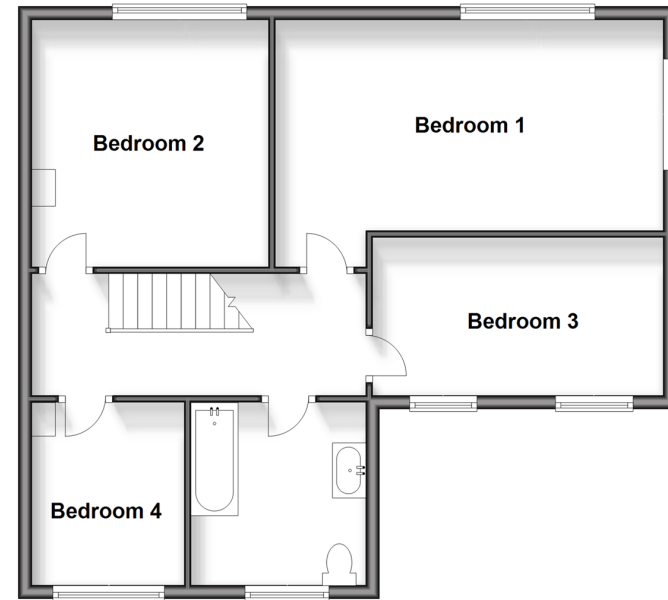
Ground Floor

Approx. 104.3 sq. metres (1122.8 sq. feet)



First Floor

Approx. 66.5 sq. metres (715.6 sq. feet)



Accommodation

GROUND FLOOR

Entrance Hall

Lounge/Kitchen/Diner: 27'6 x 27'6 (8.39m x 8.39m)

Utility Room: 12'2 x 6'4 (3.71m x 1.93m)

Bedroom 5: 11'8 x 9'4 (3.56m x 2.85m)

Bathroom: 7'3 x 6'4 (2.21m x 1.93m)

FIRST FLOOR

Landing

Bedroom 1: 18'9 x 10'3 (5.72m x 3.13m)

Bedroom 2: 11'9 x 11'6 (3.58m x 3.51m)

Bedroom 3: 13'5 x 9'9 (4.09m x 2.97m)

Bedroom 4: 8'8 x 7'5 (2.64m x 2.26m)

Bathroom : 8'7 x 8'5 (2.62m x 2.57m)

OUTSIDE

Off Road Parking

Rear Garden



Main features

- Extended home in a quiet cul-de-sac with views of Martello lakes
- Very large open plan lounge/kitchen/diner with integrated appliances
- Bathroom on the ground and first floors, plus a utility room
- Very generous sunny aspect garden
- Short walk to the beach, the Royal Military canal, bus stop and Palmarsh Primary school



Nearest Schools

Primary Schools: Palmarsh Primary 0.3 miles, Lympne Primary 1.2 miles, Hythe Bay CofE Primary 1.5 miles
Secondary Schools: Brockhill Park Performing Arts College 1.6 miles, The Folkestone School for Girls 4.7 miles, The Harvey Grammar School 5.1 miles



Transport Information

Train Stations: Sandling 2.0 miles, Westenhanger 2.3 miles, Folkestone West High Speed Link 4.9 miles



Address

Oaks View, Hythe, Kent, CT21



Directions

For directions to this property please contact us.



Call Hythe Branch 01303 267473 ■ wardsofkent.co.uk



- Legal advice should be taken to verify fixtures/fittings, planning, alterations and/or lease details
- Appliances & services are untested, dimensions are approximate and floor plans are not to scale
- Through a Homewise Home For Life Plan people aged 60+ can secure this property for up to 59% less, by purchasing a Lifetime Lease.
- This property has been underpinned, please contact us before proceeding



12823432/20240628/CDH/MB