



Price
£575,000

Freehold

3x  2x  2x 

**Mill Lane, Hythe, Kent,
CT21**

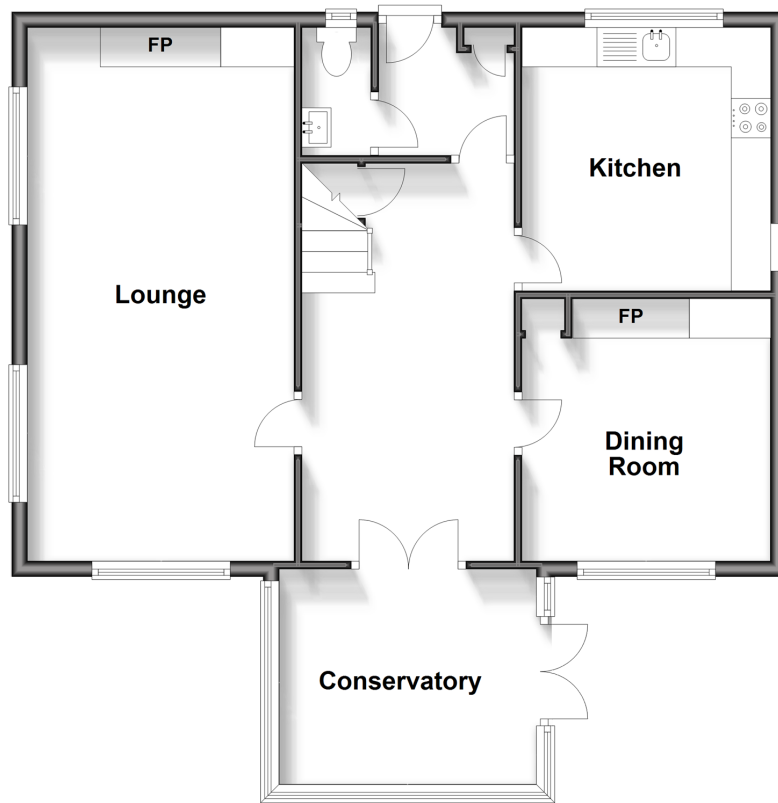
OVER 60?

Secure this property
for up to **59% less!**

Wards
Helping you move forwards

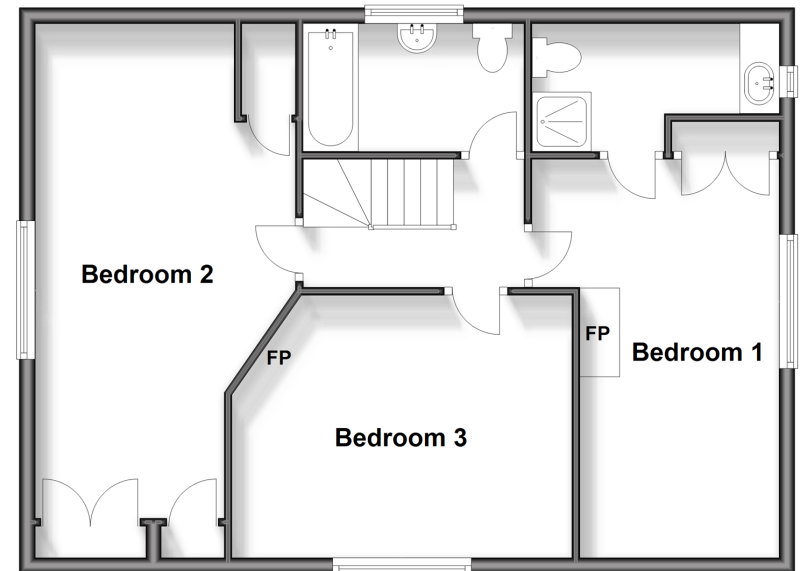
Ground Floor

Approx. 73.0 sq. metres (785.8 sq. feet)



First Floor

Approx. 63.8 sq. metres (686.4 sq. feet)



Accommodation

GROUND FLOOR

Conservatory: 11'9 x 9'5 (3.58m x 2.87m)

Hallway: 16'6 x 8'10 (5.03m x 2.69m)

Dining Room: 10'3 x 9'8 (3.13m x 2.95m)

Lounge: 22'4 (6.81m) narrowing to 21'4 (6.51m) x 11'1 (3.38m)

Kitchen: 10'8 x 10'2 (3.25m x 3.10m)

Cloakroom

FIRST FLOOR

Landing

Bedroom 1: 16'10 (5.13m) x 10'3 (3.13m) narrowing to 8'3 (2.52m)

En-Suite Shower Room: 10'2 x 5'2 maximum (3.10m x 1.58m)

Bedroom 2: 20'1 (6.13m) x 11'2 (3.41m) narrowing to 8'1 (2.47m)

Bedroom 3: 14'11 x 10'7 (4.55m x 3.23m)

Bathroom: 8'9 x 5'5 (2.67m x 1.65m)

OUTSIDE

Off Road Parking

Front & Rear Gardens



Main features

- Located just a few minutes' walk from Hythe High Street, off road parking
- Large lounge and separate dining room
- Lovely roof top views to wake up to
- Relax in the peaceful, sunny aspect garden with the sound of the running stream
- Beautiful open entrance hallway, en-suite shower room to bedroom 1



Nearest Schools

Primary Schools: Hythe Bay CofE Primary 0.7 miles, Saltwood CofE Primary 0.7 miles
Secondary Schools: Brockhill Park Performing Arts College 1.2 miles, The Folkestone School for Girls 2.5 miles, The Harvey Grammar School 2.9 miles

Transport Information

Train Stations: Sandling 1.4 miles, Folkestone West High Speed Link 2.7 miles, Westenhanger 2.7 miles

Address

Mill Lane, Hythe, Kent, CT21

Directions

For directions to this property please contact us.





Wards
Helping you move forwards

Call Hythe Branch 01303 267473 ■ wardsofkent.co.uk



■ Legal advice should be taken to verify fixtures/fittings, planning, alterations and/or lease details ■ Appliances & services are untested, dimensions are approximate and floor plans are not to scale
■ Through a Homewise Home For Life Plan people aged 60+ can secure this property for up to 59% less, by purchasing a Lifetime Lease.



12824769/20240613/MEL/MB