



**OVER 60?**

Secure this property  
for up to **59% less!**

**Price**  
**£325,000**

**Freehold**

3x  2x  1x 

**Brimstone Way, Hythe,  
Kent, CT21**

*Wards*  
Helping you move forwards



## Main features

- Beautiful home tucked away in a quiet close
- Remainder of NHBC warranty
- Sunny aspect garden which catches the sun at the end of the day
- Car barn and additional parking space
- On the main bus route, short drive to Hythe

## Accommodation

### GROUND FLOOR

Entrance Hall

Lounge: 14'8 (4.47m) narrowing to 11'5 (3.48m) x 14'5 (4.40m)

Kitchen: 12'2 x 7'6 (3.71m x 2.29m)

Cloakroom

### FIRST FLOOR

Landing

Bedroom 1: 11'9 x 8'5 (3.58m x 2.57m)

En-Suite Shower Room: 8'5 maximum x 4'3 (2.57m x 1.30m)

Bedroom 2: 10'2 x 8'5 (3.10m x 2.57m)

Bedroom 3: 8'8 x 6'3 (2.64m x 1.91m)

Bathroom

### OUTSIDE

Front and Rear Gardens

Allocated Parking Space

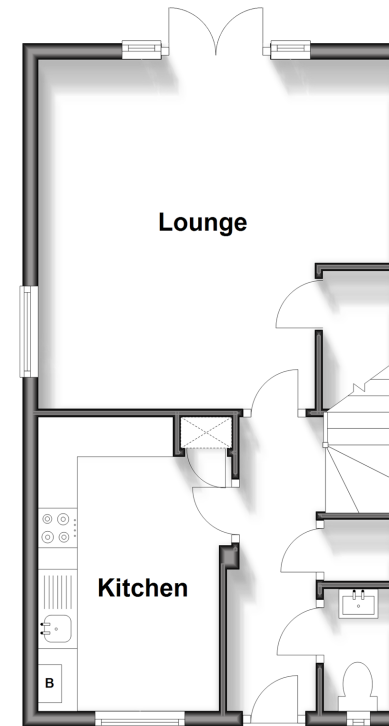
Car Barn

**Call Hythe - 01303 267473 ■ [wardsofkent.co.uk](http://wardsofkent.co.uk)**

- Legal advice should be taken to verify fixtures/fittings, planning, alterations and/or lease details
- Appliances & services are untested, dimensions are approximate and floor plans are not to scale
- Through a Homewise Home For Life Plan people aged 60+ can secure this property for up to 59% less, by purchasing a Lifetime Lease.

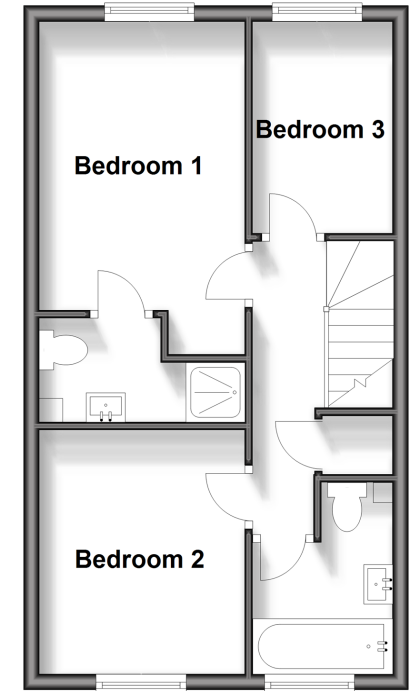
### Ground Floor

Approx. 37.2 sq. metres (400.7 sq. feet)



### First Floor

Approx. 37.2 sq. metres (400.7 sq. feet)



12824736/20240427/MEL/MB