



**Price**  
**£585,000**

**Freehold**

4x  2x  2x 

**The Haven, Hythe, Kent,  
CT21**

**OVER 60?**

Secure this property  
for up to **59% less!**

*Wards*  
Helping you move forwards



## Main features

- Large family home just a few minute's walk to the canal
- Separate lounge and dining room
- Kitchen/breakfast room and separate utility room
- Downstairs cloakroom, en-suite shower room
- Sunny aspect garden, no chain

## Accommodation

### GROUND FLOOR

- Entrance Hall
- Lounge: 20'6 x 13'5 (6.25m x 4.09m)
- Cloakroom
- Kitchen/Breakfast Room: 12'8 x 10'1 (3.86m x 3.08m)
- Utility: 6'1 x 5'3 (1.86m x 1.60m)
- Dining Room: 12'1 x 10'2 (3.69m x 3.10m)

### FIRST FLOOR

- Landing
- Bedroom 1: 13'0 x 10'10 (3.97m x 3.30m)
- En-Suite Shower Room: 6'4 x 6'3 (1.93m x 1.91m)
- Bedroom 2: 13'1 x 9'3 (3.99m x 2.82m)
- Bedroom 3: 11'0 x 7'2 (3.36m x 2.19m)
- Bedroom 4: 12'9 x 7'2 (3.89m x 2.19m)
- Bathroom: 9'4 x 5'9 (2.85m x 1.75m)

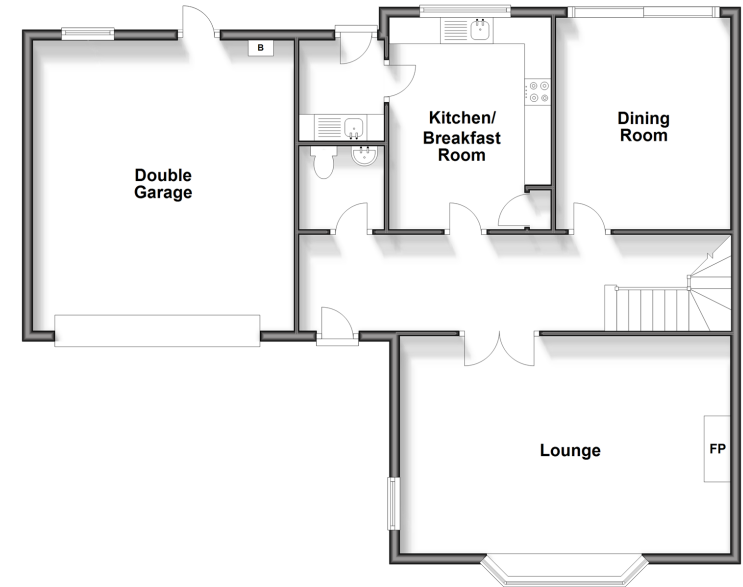
### OUTSIDE

- Off Road Parking
- Double garage: 19'6 x 16'1 (5.95m x 4.91m)
- Front & Rear Gardens

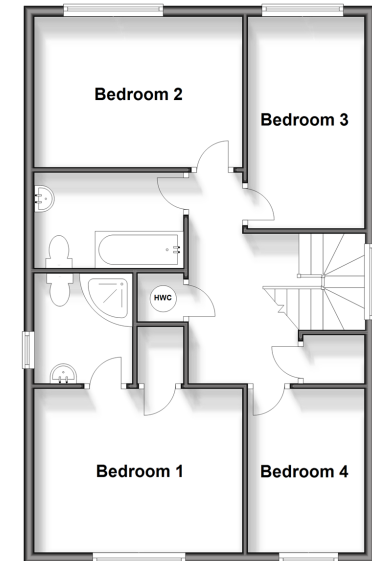
Call Hythe - 01303 267473 ■ [wardsof Kent.co.uk](http://wardsof Kent.co.uk)

- Legal advice should be taken to verify fixtures/fittings, planning, alterations and/or lease details
- Appliances & services are untested, dimensions are approximate and floor plans are not to scale
- Through a Homewise Home For Life Plan people aged 60+ can secure this property for up to 59% less, by purchasing a Lifetime Lease.

Ground Floor  
Approx. 102.6 sq. metres (1104.4 sq. feet)



First Floor  
Approx. 63.7 sq. metres (685.3 sq. feet)



EPC RATING	CURRENT:	POTENTIAL:



12824695/20240517/AH/MB